

XinYi XinKun Metal Products Co., Ltd.

# CATALOGUE 2025



Xinkun Marine

新沂新昆金属制品有限公司

<https://www.xkmarine.com/>  
[info@xkmarine.com](mailto:info@xkmarine.com)

# INTRODUCTION

**XinYi XinKun Metal Products Co., Ltd.**

**Xinkun Marine's** story started from 1999 in Kunshan, Suzhou City, Jiangsu Province, China.

It specialized in the manufacturing of marine hardware for boat builders and marine equipment distributors. With the company's development, it moved to Xinyi City, another city of Jiangsu Province, and started a larger factory in 2014, named **Xinyi Xinkun Metal Products Co., Ltd.**

In early 2021, the company established a new factory producing pontoon furniture and boats seats for pontoon boat and other boat builders.

In 2023, Xinkun Marine established another new factory mainly manufacture the aluminum boat hatches.

The factory has the area of more than 20000 square meters and more than 300 workers. Our company has the registered capital of 10 million CNY and has passed the national quality management system certification and specializes in the production of marine hardware, pontoon sofas, marine seats and seat pedestals.

The company has a professional team that is constantly committed to technological innovation and management innovation, and continues to provide high-quality products and services to the boating industry.



XinYi XinKun Metal Products Co, Ltd.

Add: Industrial Zone, Tangdian Street, Xinyi City, Jiangsu Province, China

Tel: 15062076586

Email: [info@xkmarine.com](mailto:info@xkmarine.com)

Website: <https://www.xkmarine.com/>

新沂新昆金属制品有限公司

地址：中国 - 江苏省徐州市新沂市唐店工业园区

电话：15062076586

邮件：[info@xkmarine.com](mailto:info@xkmarine.com)

网站：<https://www.xkmarine.com/>

Learn More:





Our Factory



Catalogue



Portlights & Hatches



Anchors & Anchor Rollers



Cleats & Bollards



Boat Ladders



Platforms



Ski Tow Bars & Roll Bars



Motor Brackets



Cup Holders



Rod Holders



Handrails



Steering Wheels



Life Ring Holders



Fasteners



Hinges



Vents & Lift Handles



Bimini Hardware & Antenna Base



U-Bolts



Boat Seats



Seat Pedestals



Pontoon Sofa Series



# CATALOGUE

No.	Categories	Pages
I.	Portlights & Hatches	1
II.	Anchors & Anchor Rollers	6
III.	Cleats & Bollards	12
IV.	Boat Ladders	13
V.	Platforms	25
VI.	Ski Tow Bars & Roll Bars	27
VII.	Cup Holders	29
VIII.	Rod Holders	31
IX.	Motor Brackets	38
X.	Handrails	39
XI.	Steering Wheels	43
XII.	Life Ring Holders	45
XIII.	Fasteners	46
XIV.	Hinges	49
XV.	Vents & Lift Handles	53
XVI.	Bimini Hardware & Antenna Bases	55
XVII.	U-Bolts	58
XVIII.	Boat Seats	62
XIX.	Seat Pedestals	80
XX.	Pontoon Sofa Series	83

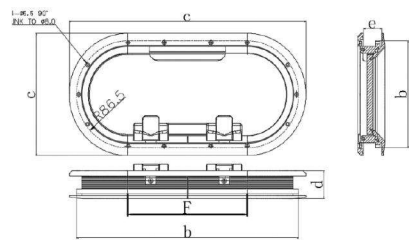
# Portlights & Hatches



## Flagship Opening Portlight

- CE**
- Made of anodized aluminium and fitted with smoked tempered glass lens, CE approved.
  - Fitted with built-in fiction levers, quick and safe locking. Supplied with white ABS triing ring ,it includes mounting screws and flyscreen, smoked glass.Easily fitted by clamping the cabin sides between inner and outer frame with screws provided, that are fastened into the outer frame.
  - The product is available in black.

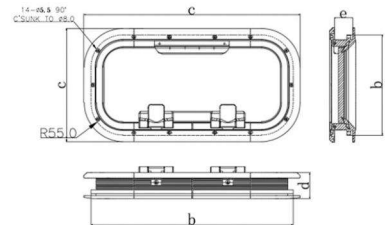
Part No.	Handle Quantity	Cut-out Dimensions mm	External Dimensions mm	Total Height mm	Deck Thickness mm	Weight kg
XK9504AA00	1	175×375	197×397	44	31	1.98
XK9504AA01	1	175×345	197×367	44	31	1.83



## Opening Portlight

- CE**
- Made of anodized aluminium and fitted with smoked tempered glass lens, CE approved.
  - The most widespread portlight worldwide for sailing boats, thanks to its high quality finish. Fitted with built-in fiction levers, quick and safe locking. Supplied with white ABS triing ring ivory colour available upon request, it includes mounting screws and flyscreen, smoked glass.Easily fitted by clamping the cabin sides between inner and outer frame with screws provided, that are fastened into the outer frame.
  - The product is available in black.

Part No.	Handle Quantity	Cut-out Dimensions mm	External Dimensions mm	Total Height mm	Deck Thickness mm	Weight kg
XK9505AA00	1	156×303	178×325	44	31	1.66
XK9505AA01	1	171×347	193×369	44	31	1.96
XK9505AA02	1	156×405	178×427	44	31	/
XK9505AA03	1	171×429	193×451	44	31	2.34
XK9505AA04	2	171×627	193×649	44	31	3.34
XK9505AA05	1	244×429	266×451	44	31	2.89
XK9505AA06	1	251×347	273×369	44	31	2.48
XK9505AA09	2	156×450	176×472	44	31	/



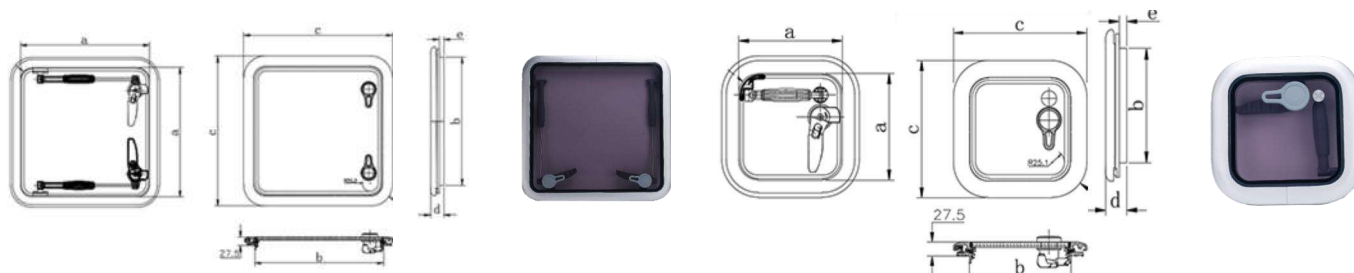


## Contour Low Profile Hatch



- Made of anodized aluminium and fitted with smoked tempered glass lens, CE approved.
- Hidden hinges on the profile, adjustable dogs with outside opening option and locked vent position.
- The product is available in black.

Part No.	Handle Quantity	Cut-out Dimensions mm	External Dimensions mm	Total Height mm	Deck Thickness mm	Weight kg
XK0095AA21	1	210×210	276×276	27.5	15	2.33
XK0095AA26	1	260×260	325×325	27.5	15	2.95
XK0095AA36	1	360×360	425×425	27.5	15	4.52
XK0095AA42	2	421×421	486×486	27.5	15	5.88
XK0095AA44	2	442×442	507×507	27.5	15	6.24
XK0095AA45	2	450×450	515×515	27.5	15	6.38
XK0095AA50	2	507×507	572×572	27.5	15	7.46
XK0095AA60	2	600×600	667×667	27.5	15	9.50
XK0095AA62	2	627×627	692×692	27.5	15	10.0



## Rectangular Deck Hatch



- Made of anodized aluminium and fitted with smoked tempered glass lens, CE approved.
- Hidden hinges on the profile, adjustable dogs with outside opening option and locked vent position.
- The product is available in black.

Part No.	Handle Quantity	Cut-out Dimensions mm	External Dimensions mm	Total Height mm	Deck Thickness mm	Weight kg
XK0089AA07	1	176×231	296×241	27.5	15	2.20
XK0089AA00	1	202×347	412×267	27.5	15	3.06
XK0089AA01	2	327×457	522×392	27.5	15	5.29
XK0089AA03	2	392×507	572×442	27.5	15	6.30
XK0089AA06	2	377×507	572×457	27.5	15	6.24



## Contour Low Profile Round Hatch



- Made of anodized aluminium and fitted with smoked tempered glass lens, CE approved.
- Hidden hinges on the profile, adjustable dogs with outside opening option and locked vent position.
- The product is available in black.

Part No.	Handle Quantity	Stay Quantity	Cut-out Dimensions mm	External Dimensions mm	Total Height mm	Deck Thickness	Weight kg
XK0094AA28	1	0	Φ278	Φ343	27.5	15	2.70
XK0094AA32	1	1	Φ320	Φ383	27.5	15	3.30
XK0094AA42	2	1	Φ420	Φ485	27.5	15	4.78
XK0094AA48	2	1	Φ480	Φ545	27.5	15	5.70
XK0094AA52	2	1	Φ522	Φ587	27.5	15	6.25

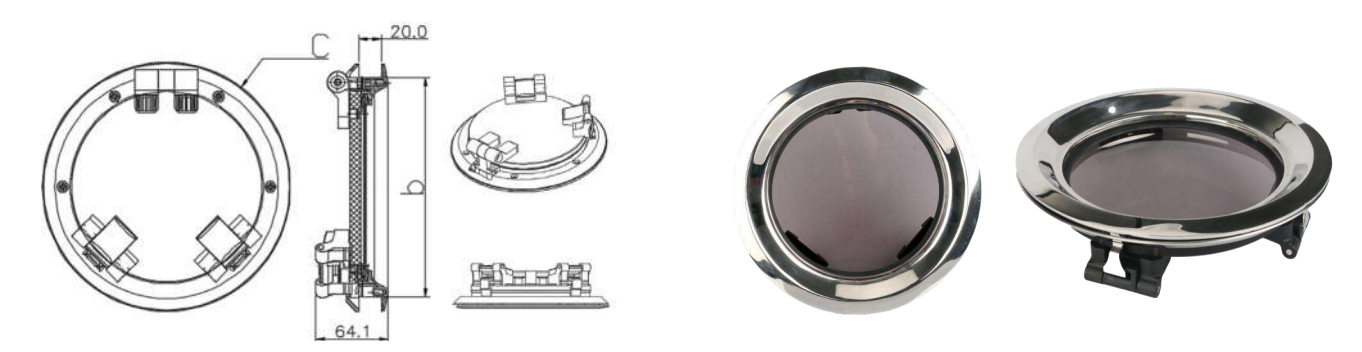


Portlights & Hatches

Opening Round Portlight

- CE
- Supplied with triing ring made of chromedABS, mounting screws and smoked lens.
  - Fast and simple installation by means of a ring nut with threaded bores, to be made by a single operator. 180° opening.

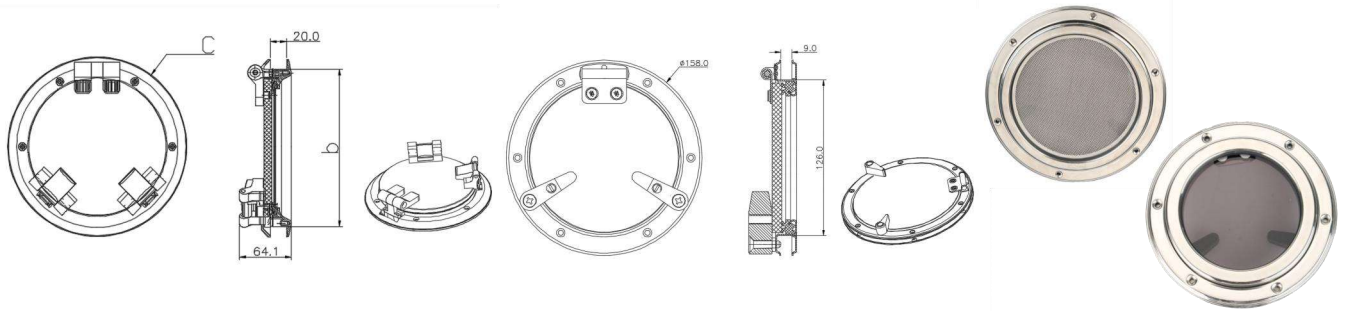
Part No.	Handle Quantity	Cut-out Dimensions mm	External Dimensions mm	Total Height mm	Deck Thickness mm	Weight kg
XK0099SA8	2	Φ200	Φ220	37	20	1.84
XK0099SA9	2	Φ240	Φ260	37	20	2.12



Opening Round Portlight

- CE
- Made of mirror polished stainless steel.very accurate finishing.
  - Removable stainless steel flyscreen.
  - High-resistance polycarbonate lens.

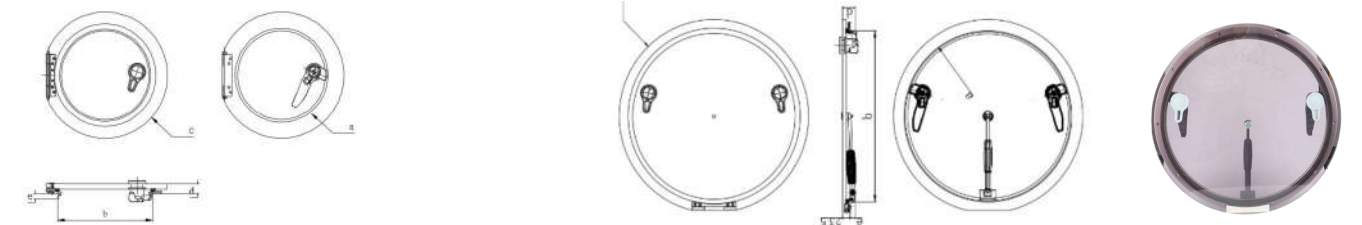
Part No.	Cut-out Dimensions mm	External Dimensions mm	Total Height mm	Deck Thickness mm	Mosquito Net	Weight kg
XK0951SA1	Φ128	Φ158	20	9	-	0.42
XK0952SA1	Φ153	Φ184	20	9	-	0.53
XK0953SA1	Φ176	Φ210	20	9	-	0.62
XK0951SA2	Φ128	Φ158	20	9	Ä	0.45
XK0952SA2	Φ153	Φ184	20	9	Ä	0.56
XK0953SA2	Φ176	Φ210	20	9	Ä	0.66



Flush Round Hatch

- CE
- Made of anodized aluminium and fitted with smoked tempered glass lens.  
It fits to a flat surface and requires a special recess to be installed into the deck to receive the hatch.  
Clean aggressive look, no protruding parts, it uses deck space wisely.
- Main features:
- No visible frame: the tinted acrylic panel is all that can be seen on deck.
  - Very thick self-supporting plexiglass lid.
  - 90° opening stay, elf-locking in any position.
  - Smoked lens available upon request.
  - Exterior handle for use as escape hatch.

Part No.	Handle Quantity	Cut-out Dimensions mm	External Dimensions mm	Total Height mm	Deck Thickness mm	Weight kg
XK0096AA28	1	Φ278	Φ328	27.9	15	/
XK0096AA42	2	Φ420	Φ500	27.9	15	/
XK0096AA52	2	Φ522	Φ603	27.9	15	/





## Flush Deck Hatch



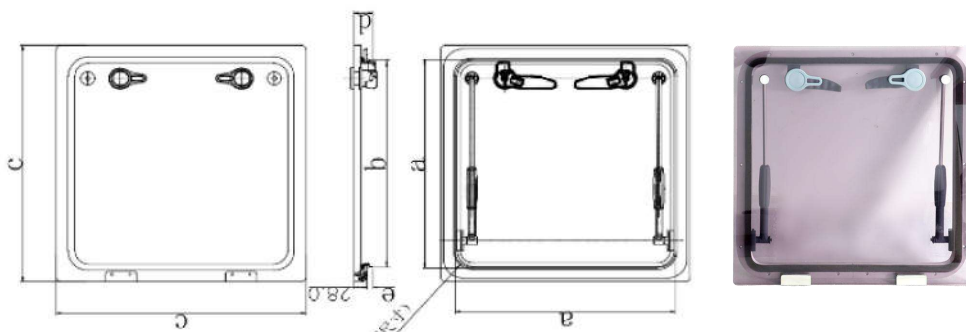
Made of anodized aluminium and fitted with smoked tempered glass lens.  
It fits to a flat surface and requires a special recess to be installed into the deck to receive the hatch.  
Clean aggressive look, no protruding parts, it uses deck space wisely.

Main features:

No visible frame: the tinted acrylic panel is all that can be seen on deck.

- Very thick self-supporting plexiglass lid.
- 90° opening stay, elf-locking in any position.
- Smoked lens available upon request.
- Exterior handle for use as escape hatch.

Part No.	Handle Quantity	Cut-out Dimensions mm	External Dimensions mm	Total Height mm	Deck Thickness mm	Weight kg
0086	2	421×421	487×487	27.5	15	6.41
0086	2	502×502	568×568	27.5	15	8.01



## Opening Portlight

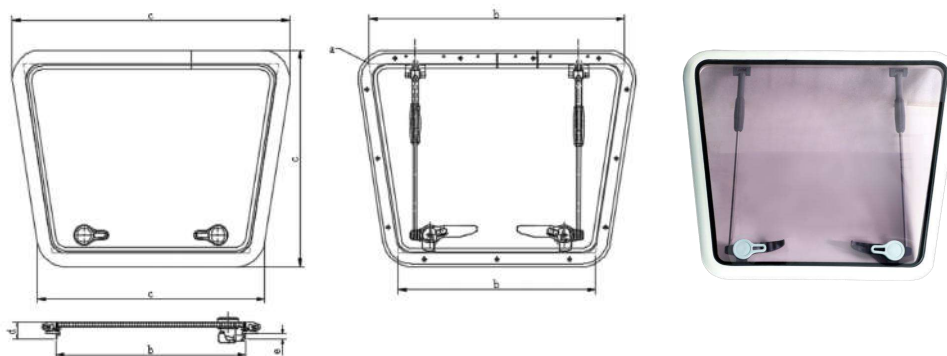


Made of anodized aluminium and fed with smoked glass lenses, self-locking in any position with their built-in friction lever.

Main Features:

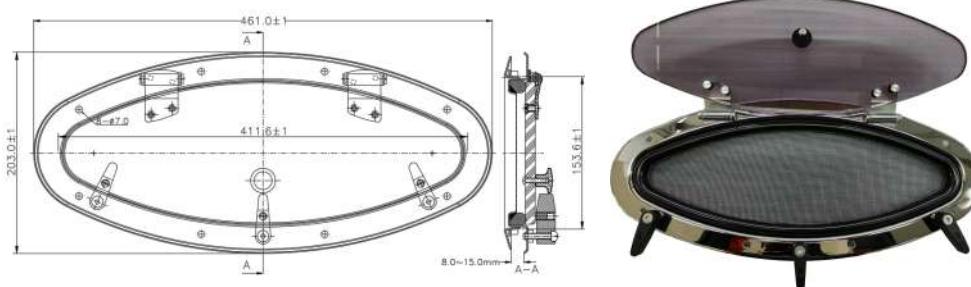
- Internal and external opening handles already installed where fitted .
- Lock vent position.
- Anti-intrusion safety lock.
- Lenses, seals, handles and friction levers can be replaced.

Part No.	Handle Quantity	Cut-out Dimensions mm	External Dimensions mm	Total Height mm	Deck Thickness mm	Weight kg
0085	2	633×489×472	685×562×536	27.5	20	/
0085	2	700×550×600	755×623×665	27.5	20	/



## Opening Portlight

Part No.	Handle Quantity	Cut-out Dimensions mm	External Dimensions mm	Total Height mm	Deck Thickness mm	Weight kg
XK6160SACN	3	414×156	460×205	40	12	/



Portlights & Hatches / Anchors & Anchor Rollers

Opening Round Portlight

- CE
- Made of anodized aluminium and fitted with smoked tempered glass lens, CE approved.

- The product is available in black.

Part No.	Handle Quantity	Cut-out Dimensions mm	External Dimensions mm	Total Height mm	Deck Thickness mm	Weight kg
XK0099AA07	2	Φ173	Φ195	44	31	1.02
XK0099AA08	2	Φ200	Φ222	44	31	/
XK0099AA09	2	Φ238	Φ260	44	31	/
XK0099AA12	2	Φ305	Φ327	44	31	/



Inspection Hatches

- Made of ABS plastic.

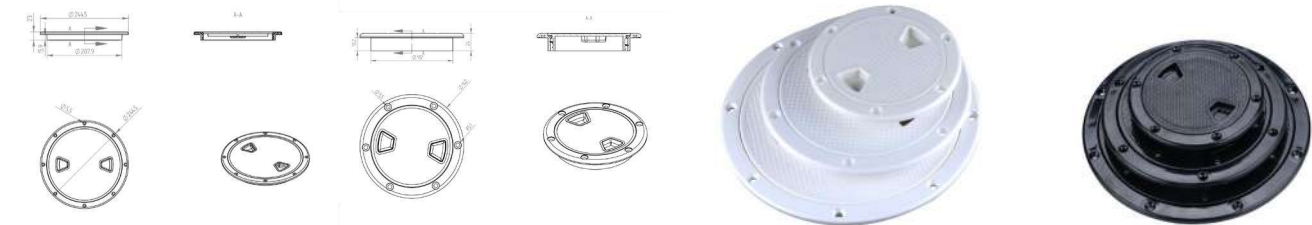
Part No.	Length	Width	Color
DP-15	15"	11"	White
DP-18	17.3"	12.4"	White
DP-24	24"	14"	White
DP-15B	15"	11"	Black
DP-18B	17.3"	12.4"	Black
DP-24B	24"	14"	Black



Inspection Hatches

- Made of ABS plastic.

Part No.	Size	Color
WB04	4"	White
WB06	6"	White
WB08	8"	White
WB04B	4"	Black
WB06B	6"	Black
WB08B	8"	Black





# Anchors & Anchor Rollers



## Stainless Steel Delta Anchor

- Made of mirror polished stainless steel.

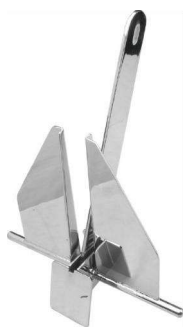
Part No.	Weight kg	Boat Length mm
XK0980SA04	4	45 - 60
XK0980SA06	6	45 - 75
XK0980SA10	10	60 - 105
XK0980SA16	16	85 - 135
XK0980SA20	20	120 - 165
XK0980SA25	25	150 - 180
XK0980SA32	32	165 - 195
XK0980SA34	40	180 - 220
XK0980SA50	50	210 - 250
XK0980SA63	63	240 - 275



## Stainless Steel Danforth Anchor

- Made of mirror polished stainless steel.

Part No.	Weight kg
XK0981SA04	1.5
XK0981SA06	2.0
XK0981SA10	2.5
XK0981SA16	3.0
XK0981SA20	3.5
XK0981SA25	4.0
XK0981SA32	4.5
XK0981SA34	5.0
XK0981SA36	5.5
XK0981SA38	6.0
XK0981SA40	6.5
XK0981SA42	8.0
XK0981SA46	10.0
XK0981SA48	12.0
XK0981SA50	15.0



## Stainless Steel Grapnel Anchor

- Made of mirror polished stainless steel.

Part No.	Weight kg
XK0982SA02	0.7
XK0982SA04	1.5
XK0982SA10	2.5
XK0982SA20	3.2
XK0982SA25	4.0
XK0982SA40	6.0
XK0982SA50	8.0
XK0982SA60	10.0
XK0982SA70	12.0
XK0982SA80	15.0



## Anchors & Anchor Rollers

### Anchor Roller

- Made of mirror polished stainless steel.

Part No.	Length mm	Width mm	Height mm	Roller mm
XK7556S	223	58	72	51 × 51



### Long Fairlead Anchor Roller

- Made of mirror polished stainless steel.

Part No.	Length mm	Width mm	Height mm	Roller mm
XK7550S	228	51	83	64 × 44
XK7552S	279	51	53.5	64 × 44



### Large Anchor Roller

- Made of electric polished stainless steel.

Part No.	Length mm	Width mm	Height mm	Roller mm
XK7557S	390	52	45	64 × 44
XK7558S	458	87	91	76 × 76



### Extra Large Anchor Roller

- Made of mirror polished stainless steel.

Part No.	Length mm	Width mm	Height mm	Roller mm
XK7560S	505	73	79	68×60
XK7562S	590	95	85	76×86



### Pivoting Self-Launch Bow Roller

- Made of mirror polished stainless steel.

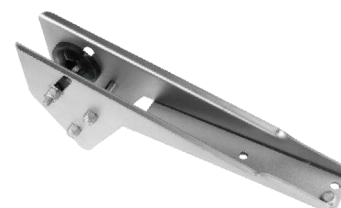
Part No.	Length mm	Width mm	Height mm	Roller mm
XK7555S	534	75	152	70



### Anchor Bow Roller

- Made of surface sandblasting stainless steel.

Part No.	Length mm	Width mm	Height mm	Roller mm
XK7553	380	46.5	166	64 × 44
XK7554	583	90	220	102×86





## Pivoting Self-lauching Anchor Rollers

- Made of mirror polished stainless steel.

Part No.	Length mm	Width mm	Suit anchor
MTK330	330	70	Max.10
MTK400	400	70	Max.15
MTK495	495	90	Max.20
MTK595	595	90	Max.30
MTK695	695	90	Max.30



## Selflauching Bow Roller

- Made of mirror polished stainless steel.

Part No.	Length mm	Width mm	Suit anchor
XK7536	370	72	Max.15.0
XK7537	540	90	Max.25.0



## Stamped Anchor Rollers

- Made of mirror polished stainless steel.

Part No.	Length mm	Height mm	Width mm
XK2204S	200	75	57
XK2205S	230	75	57
XK2206S	250	75	57



## Hinged Bow Rollers

- Made of mirror polished stainless steel.

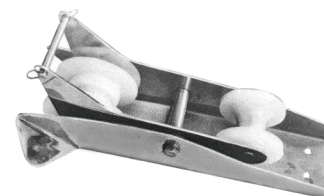
Part No.	Length mm	Height mm	Width mm
XK2207S	330	110	57
XK2208S	360	110	57
XK2209S	380	110	57



## Pivoting Bow Rollers

- Made of mirror polished stainless steel.

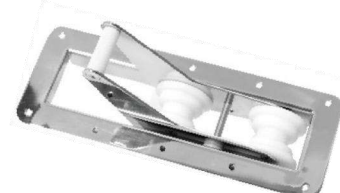
Part No.	Length mm	Height mm	Width mm	Suit anchor
XK7538	328	70	96	5.0 - 8.0
XK7539	430	100	160	10.0 - 12.0



## Folding Bow Roller

- Made of mirror polished stainless steel.

Part No.	Length mm	Width mm	Suit anchor
XK4145	400	145	Max.15.0

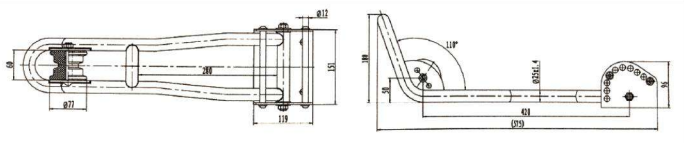


Cleats & Bollards

Stern anchor outrigger

- Made of mirror polished stainless steel.

Part No.	Length mm	Base Size mm	Suit anchor
XK4054S	575	151×119	Max.15.0



Small Bow Roller

- Made of mirror polished stainless steel.

Part No.	Length mm	Width mm	Height mm	Roller mm
XK2211S	155	51	70.8	64 × 44



Platform Bow Roller

- Made of surface sandblasting stainless steel.

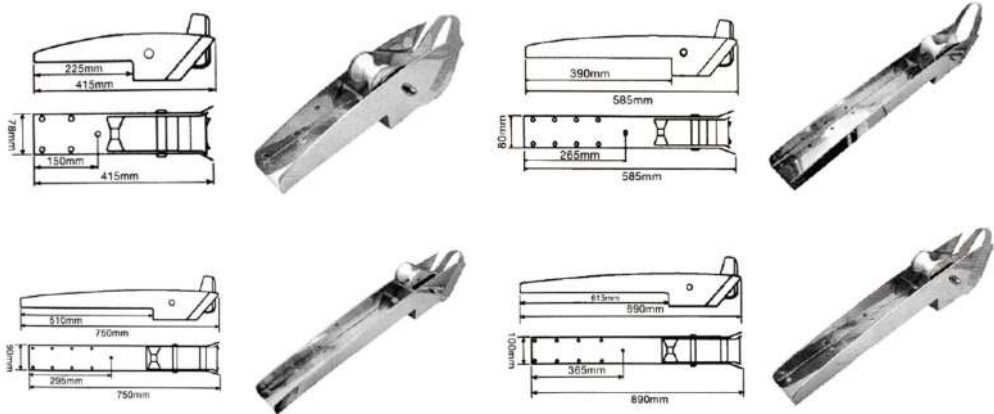
Part No.	Base Size mm
XK7563	200×97
XK7564	156×50



Pivoting Anchor Bow Rollers

- Made of mirror polished stainless steel.

Part No.	Length mm	Width mm	Suit Ancho mm
XK03464242	425	78	7.5.0 - 15.0
XK03464256	585	80	10 - 20.0
XK03464275	735	90	15 - 30
XK03464295	900	100	30 - 50



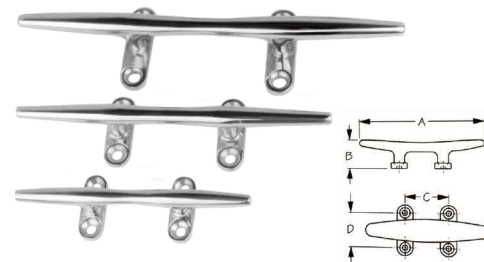
# Cleats & Bollards



## Light Duty Hollow Base Cleats

- Made of mirror polished stainless steel.

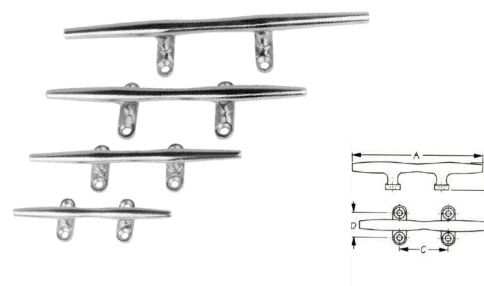
Part No.	Size	A mm	C mm	D mm	B mm
XK9995S4	4"	100	48	22	25
XK9995S5	5"	125	5A	25	27
XK9995S6	6"	150	56	26	31
XK9995S8	8"	200	75	28	41
XK9995S10	10"	250	95	44	50
XK9995S12	12"	300	98	48	52



## Heavy Duty Hollow Base Cleats

- Made of mirror polished stainless steel.

Part No.	Size	A mm	C mm	D mm	B mm
XK9996S4	4"	100	50.5	23	26.5
XK9996S5	5"	125	56.5	25	29
XK9996S6	6"	150	57	26	31
XK9996S8	8"	200	73	32	38
XK9996S10	10"	250	94.5	47	44
XK9996S12	12"	300	98.5	49	53



## Stainless Steel Mooring Cleats

- Made of mirror polished stainless steel.

Part No.	Size	A mm	C mm	D mm	B mm
XK9997S4	4"	100	29	24	25
XK9997S5	5"	125	41	29	25
XK9997S6	6"	150	41	39	28
XK9997S8	8"	200	49	44	31
XK9997S10	10"	250	57	45	A0
XK9997S12	12"	300	95	50	55



## Stainless Steel Mooring Cleats

- Made of mirror polished stainless steel.

Part No.	Base Size mm	Center Hole mm
XK7910S - P	89×30	50
XK7911S - P	120×35	69
XK7912S - P	150×40	83
XK7913S - P	160×50	100





Cleats & Bollards

Stainless Steel Mooring Cleats

- Made of mirror polished stainless steel.

Part No.	Length mm	Base Size mm	Heigth mm	Center Hole mm
XK7910SN	150	90×30	45	47
XK7911SN	205	120×35	55	69
XK7912SN	265	150×40	70	83
XK7913SN	310	160×50	80	83



X-type Cleat

- Made of mirror polished stainless steel.

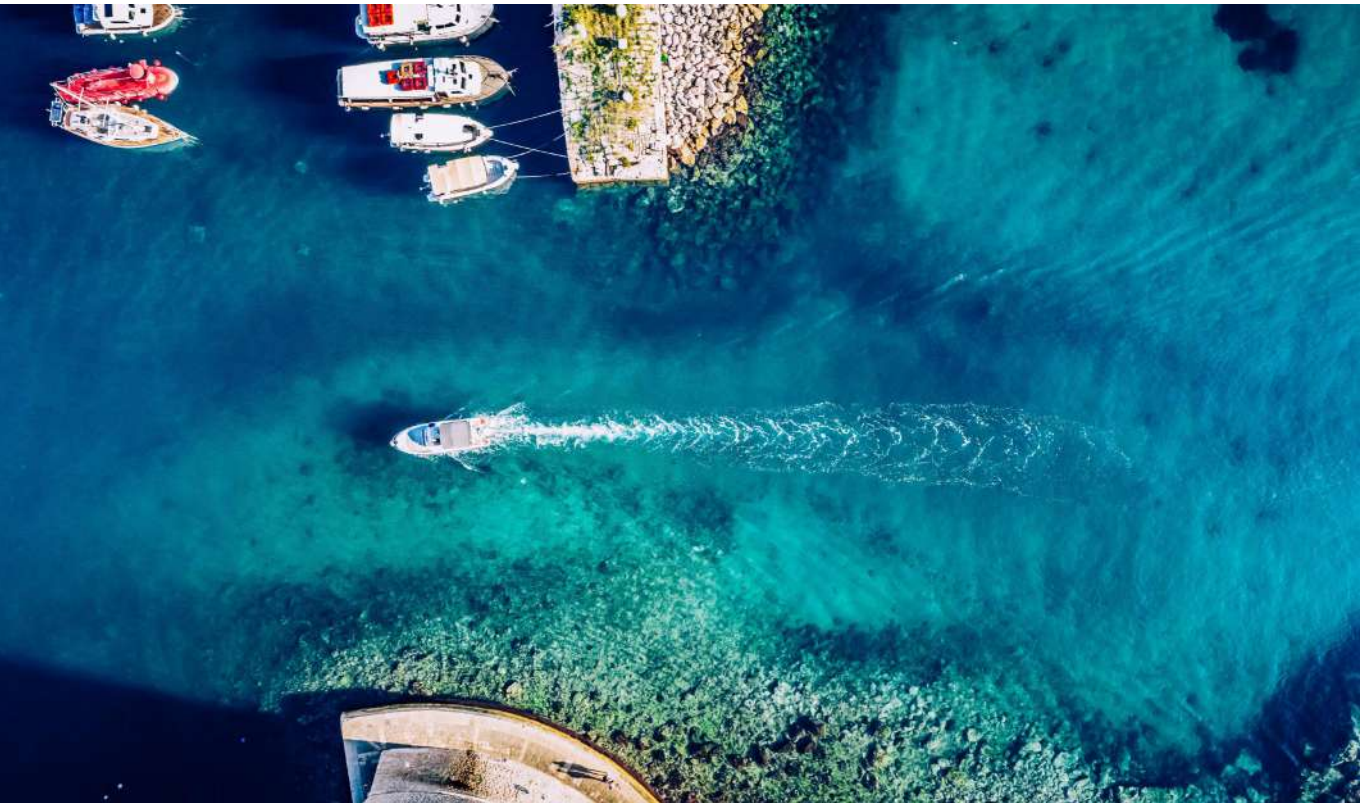
Part No.	Size mm	Heigth mm
XK3100SA	220	50



Stainless Steel Folding Cleats

- Made of mirror polished stainless steel.

Part No.	Size	Screw
XK3266S	5"	
XK3266SS	6"	
XK3266SL	8"	
XK3266SF	5"	Flush Screw
XK3266SSF	6"	Flush Screw
XK3266SLF	8"	Flush Screw



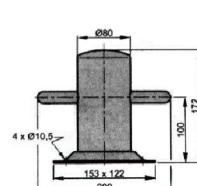
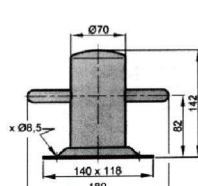
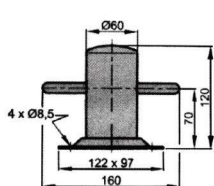
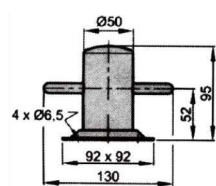
# Bollards



## Mooring Bollards

- Made of mirror polished stainless steel.

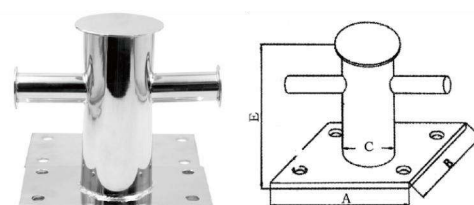
Part No.	Base Size mm	Height mm
XK7568	92×92	95
XK7565	97×122	120
XK7569	118×140	142
XK7567	122×153	172



## Mooring Bollard

- Made of mirror polished stainless steel.

Part No.	A mm	B mm	E mm	C mm
XK7566S	200	120	120	60



## Mooring Bollard

- Made of mirror polished stainless steel.

Part No.	Base Size mm	Height mm
XK7566S2	260×120	162



## Stainless Steel Horn Bollards

- Made of mirror polished stainless steel.

Part No.	Length mm	Height mm	Base Size mm
XK9942	160	60	160×58
XK9943	200	70	200×68
XK9944	240	85	240×70
XK9945	300	103	300×80
XK9946	350	115	350×88



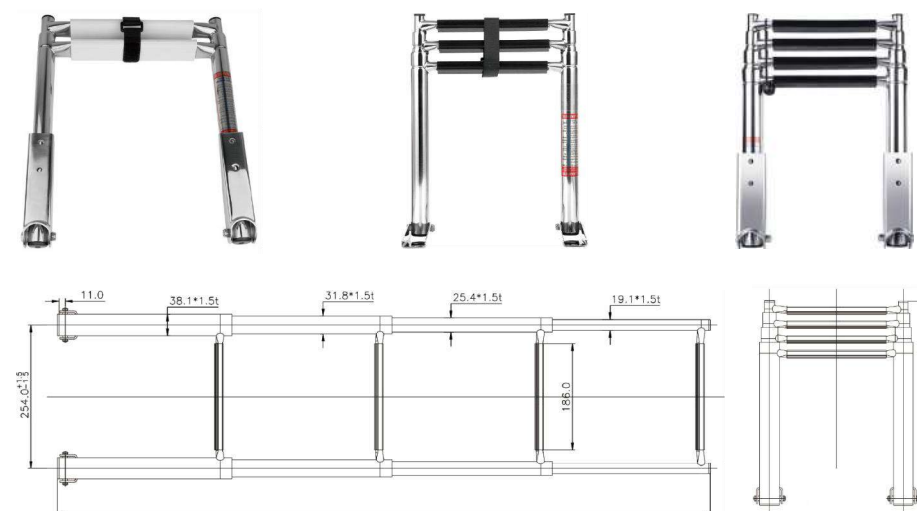




## Over Platform Telescoping Ladders

- Made of mirror polished stainless steel.

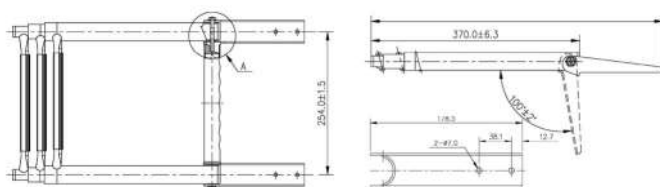
Part No.	Step	Length $\longleftrightarrow$		Width Centrum mm
		Deployed mm	Stowed mm	
XK7321SW	2	598	345	254
XK7331SW	3	875	370	254
XK7341SW	4	1155	395	254
XK7321S	2	598	345	254
XK7331S	3	875	370	254
XK7341S	4	1155	395	254



## Over Platform Telescoping Ladders With Handle Bar

- Made of mirror polished stainless steel.

Part No.	Step	Length $\longleftrightarrow$		Width Centrum mm
		Deployed mm	Stowed mm	
XK7331SMH	3	875	370	254
XK7341SMH	4	1155	395	254



• XK7331SMH

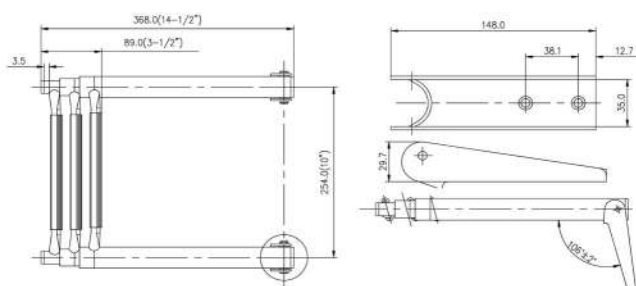


• XK7341SMH

## Over Platform Telescoping Boat Ladders

- Made of mirror polished stainless steel.

Part No.	Step	Length $\longleftrightarrow$		Width Centrum mm
		Deployed mm	Stowed mm	
XK7331A1	3	875	370	254
XK7341A1	4	1155	395	254

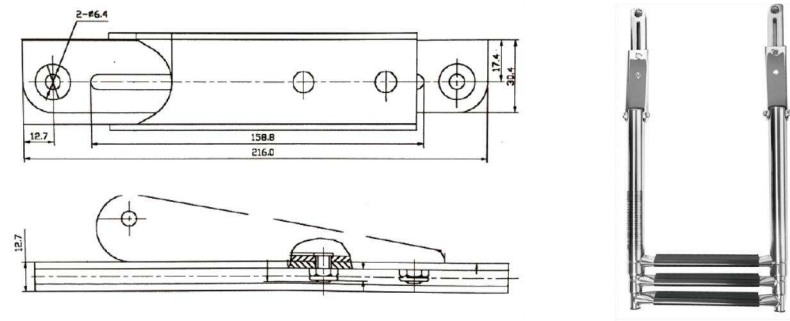


Boat Ladders

Over Platform Telescoping Sliding Ladders

- Made of mirror polished stainless steel.

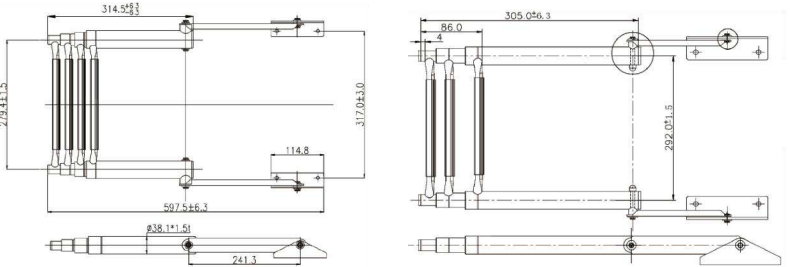
Part No.	Step	Length		Width Centrum mm
		Deployed mm	Stowed mm	
XK7334S	3	890	368	254



Over Platform Telescoping Boat Ladders

- Made of mirror polished stainless steel.

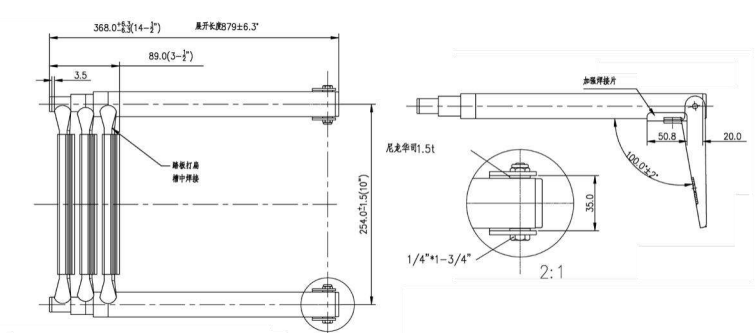
Part No.	Step	Length		Width Centrum
		Deployed mm	Stowed mm	
XK7331BBD	3	701	305	292
XK7341BBD	4	925.5	314	279



Over Platform Telescoping Ladders With Double Tube Steps

- Made of mirror polished stainless steel.

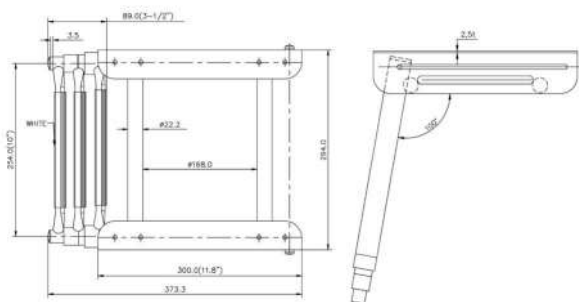
Part No.	Step	Length		Width Centrum mm
		Deployed mm	Stowed mm	
XK7331SHF3	3	875	370	304
XK7341SHF4	4	1155	395	304



## Under Platform Telescoping Ladders

- Made of mirror polished stainless steel.

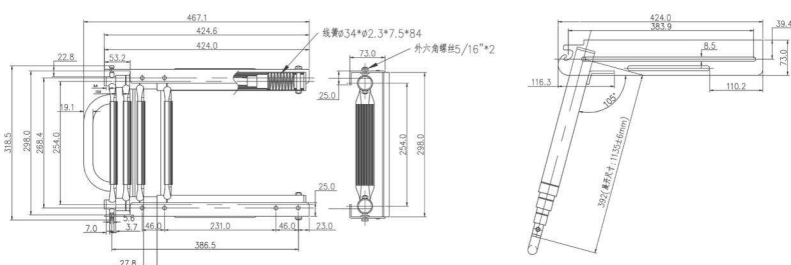
Width 254 mm	Step	Deployed mm
7325S	2 step	596
7335S	3 step	875
7345S	4 step	1156



## Under Platform Telescoping Ladders With Handle Bar

- Made of mirror polished stainless steel.

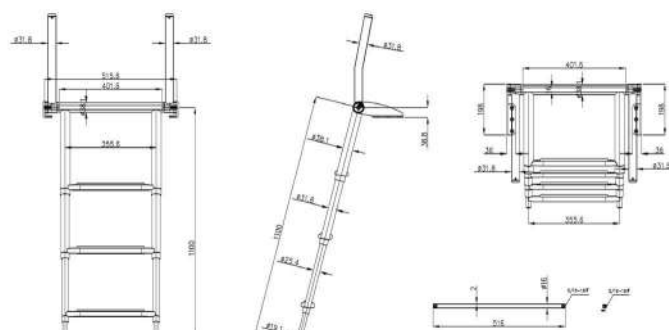
Part No.	Step	Length  ←→		Width Centrum mm
		Deployed mm	Stowed mm	
8335SAR3	3	875	430	254
8345SAR4	4	1156	456	254



## Over Platform Telescoping Ladder With Grab Rails

- Made of mirror polished stainless steel.

Part No.	Step	Length  ←→		Width Centrum mm
		Deployed mm	Stowed mm	
XK47460	4	1120	430	300

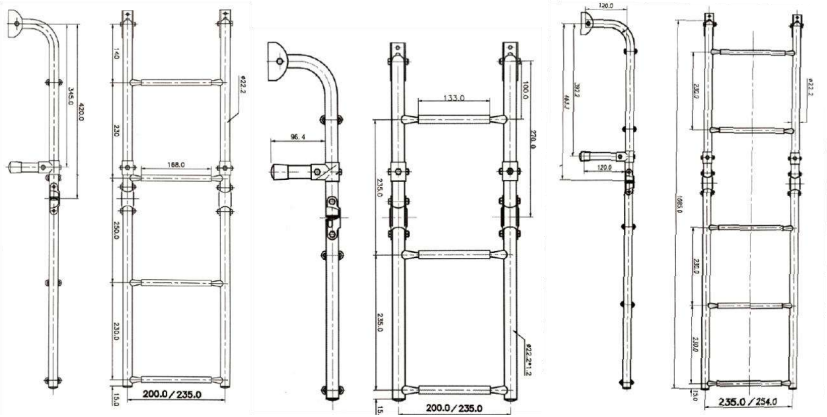


Boat Ladders

Transom Folding Boat Ladders

- Made of mirror polished stainless steel.

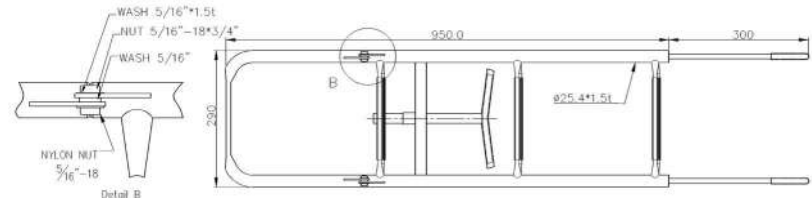
Part No.	Step	Length		Width Centrum mm
		Deployed mm	Stowed mm	
XK7101S	1+2=3	600	320	200
XK7102S	2+2=4	880	450	200
XK7101SAT	1+2=3	600	310	235
XK7102SAT	2+2=4	880	450	235
XK7105SAT	2+3=5	1085	605	235



Stainless Steel Bow Ladders

- Made of mirror polished stainless steel.

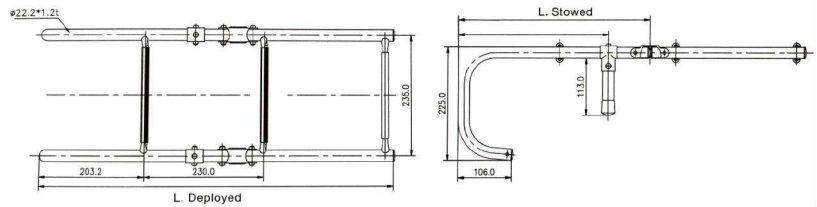
Part No.	Step	Length mm	Width Centrum mm
XK7103SA3	3	925	245
XK7103SA4	4	1185	245
XK7103SA5	5	1450	245



Stainless Steel Gunwale Folding Ladders

- Made of mirror polished stainless steel.

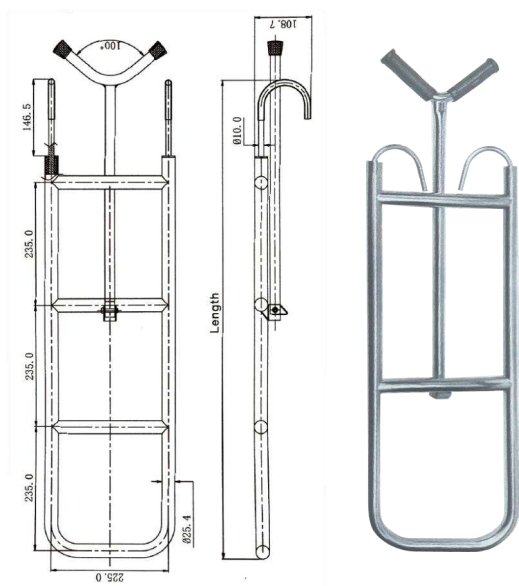
Part No.	Step	Length		Width Centrum mm
		Deployed mm	Stowed mm	
XK7231S3	1+2	685	383	235
XK7231S4	2+2	910	480	235
XK7231S5	3+2	1155	725	235





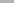
- Made of mirror polished stainless steel.

Part No.	Step	Length mm	Width Centrum mm
XK7103SA225	3	680	225
XK7103SA235	4	915	225



## Hook Ladders For Bow And Bowsprit

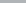
- Made of mirror polished stainless steel.

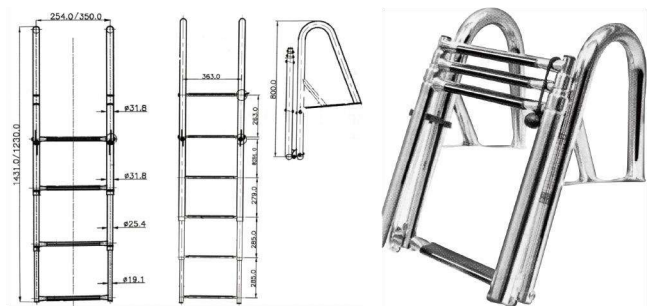
Part No.	Step	Length		Width Centrum mm
		Deployed mm	Stowed mm	
XK4027S	3	900	675	290
XK4158S	4	1200	675	290



## Folding Telescopic Ladder With Handrails

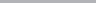
- Made of mirror polished stainless steel.

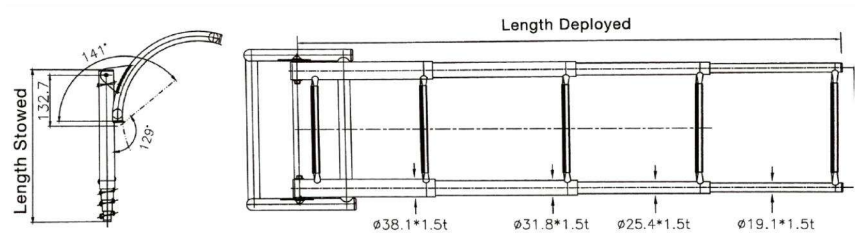
Part No.	Step	Length 		Width Centrum mm
		Deployed mm	Stowed mm	
XK4064S	1+3=4	1230	368	254
XK4067S	2+4=6	1955	800	360



## Inflatable Boat Telescopic Ladders

- Made of mirror polished stainless steel.

Part No.	Step	Length 		
		Deployed mm	Stowed mm	
XK8212SA3	4	880	370	254
XK8212SA4	5	1190	394	254

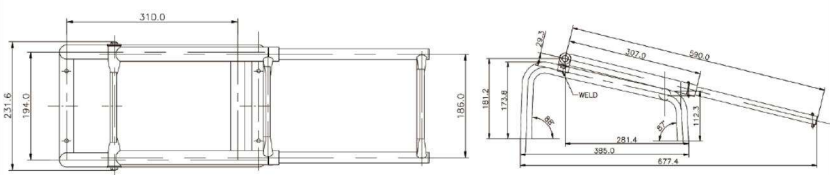


Boat Ladders

Transom Folding Ladders

- Made of mirror polished stainless steel.

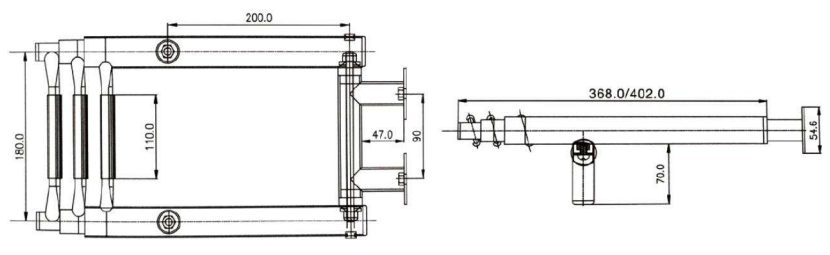
Part No.	Step	Length mm	Width
XK7326SA	3 step	667.4	231.6
XK7326SW	3 step	667.4	231.6



Transom Telescopic Ladder

- Made of mirror polished stainless steel.

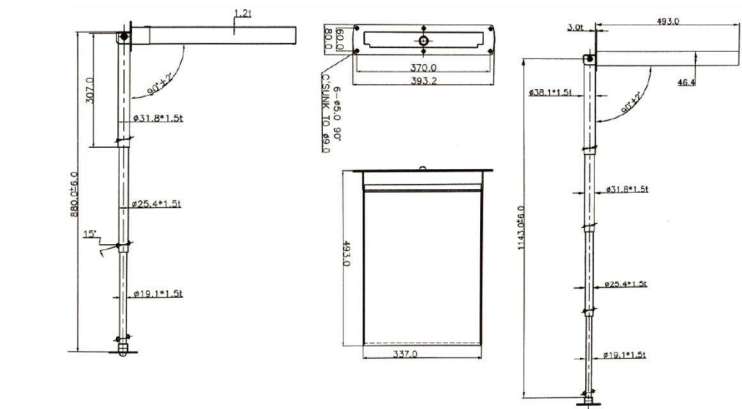
Part No.	Step	Length  ←→		Width Centrum mm
		Deployed mm	Stowed mm	
XK7113S	3	1115	368	180
XK7114S	4	1160	402	180



Box Telescopic Ladder

- Made of mirror polished stainless steel.

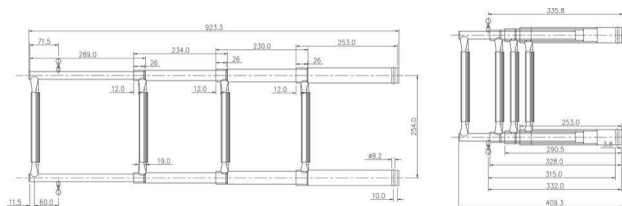
Part No.	Step	Length  ←→		Width Centrum mm
		Stowed mm	Deployed mm	
XK3108SA3H	3	330×490×46	875	254
XK3108SA4H	4	330×490×46	1145	254



## Under Platform Telescoping Boat Ladders

- Made of mirror polished stainless steel.

Part No.	Step	Length		Width Centrum mm
		Deployed mm	Stowed mm	
XK84285S	4	1160	419	280



## O/B Swim Platform With Ladder

- Made of mirror polished stainless steel.

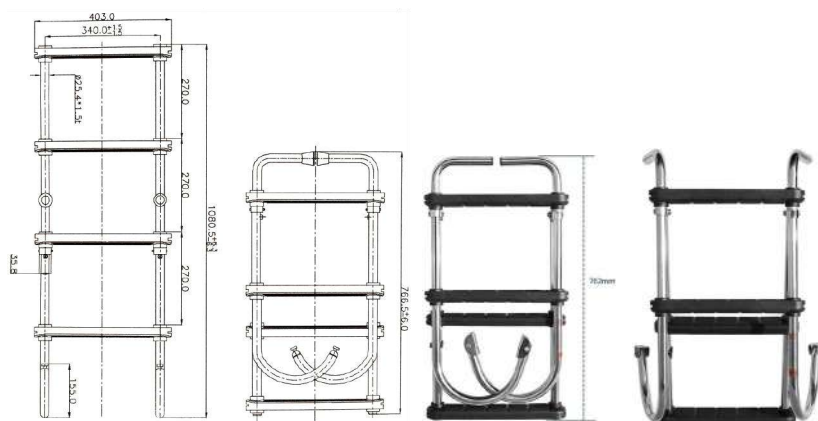
Part No.		Type	Part No.		Type
XK9924SBOT2O	2	One handrail, One support	9924SBO2O	2	One handrail, One support
XK9924SBOT3O	3	One handrail, One support	9924SBO3O	3	One handrail, One support
XK9924SBOT2D	2	Double handrail	9924SBO2D	2	Double handrail
XK9924SBOT3D	3	Double handrail	9924SBO3D	3	Double handrail



## Folding Pontoon Boat Ladders

- Made of mirror polished stainless steel.

Part No.	Step	Length		Width mm
		Deployed mm	Stowed mm	
XK3136S4	2+2	1143	762	1340
XK3136S5	2+3	1385	1041	340

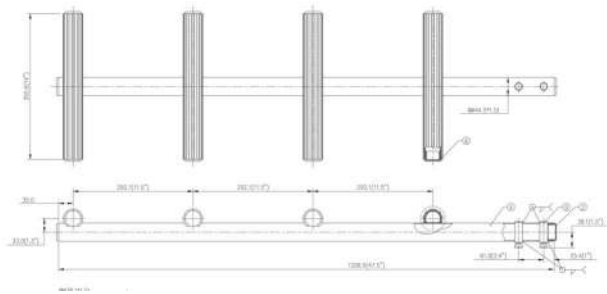


Boat Ladders

Dive Ladders

- Made of mirror polished stainless steel.

Part No.	Step	Length ×Width mm
XK7214S3	3	860×355
XK7214S4	4	1140×355



Dive Ladders

- Made of mirror polished stainless steel.

Part No.	Step	Length  ←→		Width Centrum mm
		Deployed mm	Stowed mm	
XK8215S3	3	860	430	340
XK8215S4	4	1125	477	340
XK8216S3	3	870	420	340
XK8216S4	4	1048	440	340
XK8217S3	3	870	420	340
XK8217S4	4	1048	440	340



• XK8215S3



• XK8215S4



• XK8216S3



• XK8216S4



• XK8217S3

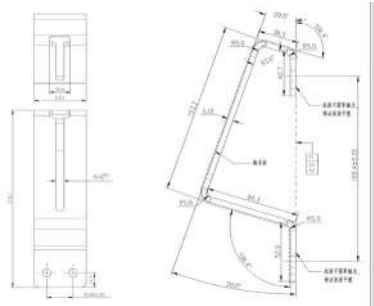


• XK8217S4

Dive Ladder Bracket

- Made of mirror polished stainless steel.

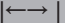
Part No.	Step
XK3006S	C type

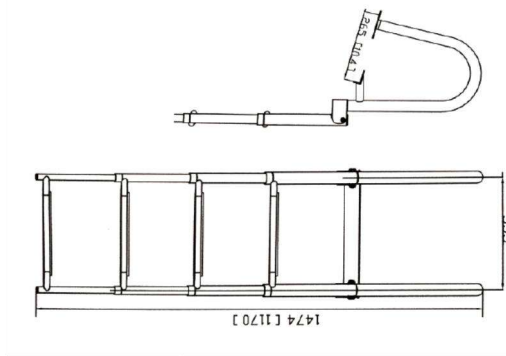




## Pontoon Folding Telescoping Ladders

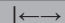
- Made of mirror polished stainless steel.

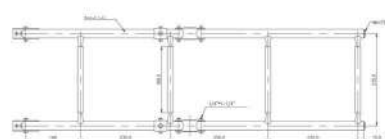
Part No.	Step	Length 		Width mm
		Deployed mm	Stowed mm	
XK8051S3	3	1170	455	353
XK8051S4	4	1474	477	353



## Stainless Steel Gunwale Mounted Boarding Ladders

- Made of mirror polished stainless steel.

Part No.	Step	Length 		Width Centrum mm
		Deployed mm	Stowed mm	
XK7101SR	1+2 Plastic	730	372	228
XK7102SR	2+2 Plastic	910	553	228
XK7105SR	2+3 Plastic	1100	563	228
XK7101SRW	1+2 Teak wood	730	372	228
XK7102SRW	2+2 Teak wood	910	553	228
XK7105SRW	2+3 Teak wood	1100	563	228



## New Handrail Ladder, Mirror Polished

- Made of mirror polished stainless steel.

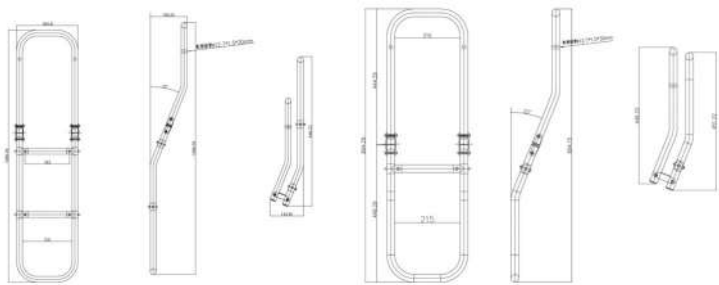
Part No.	Step	Deployed mm	Max.width mm
XK8331SH3	3	869	366
XK8331SH4	4	1160	375
XK8331SAHT3	1+2	825	366
XK8331SAHT4	1+3	1060	366



Boat Ladders

Aluminum Folding Ladders

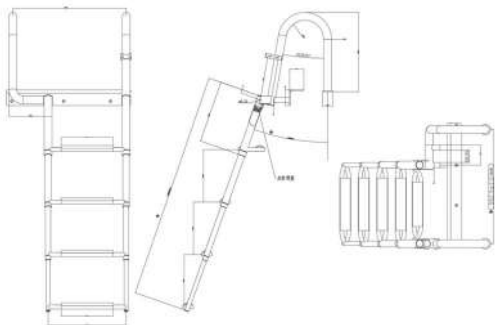
Part No.	Step	Length  ←→		Width Centrum mm
		Deployed mm	Stowed mm	
XK03501605	1	895	468	215
XK03501607	2	1090	646	215



Stainless Steel Telescoping Folding Ladders With Wide Handrails

- Made of mirror polished stainless steel.

Part No.	Step	Length  ←→		Width Centrum mm
		Deployed mm	Stowed mm	
XK5304L	4	1142	436	552
XK5304R	4	1142	436	552



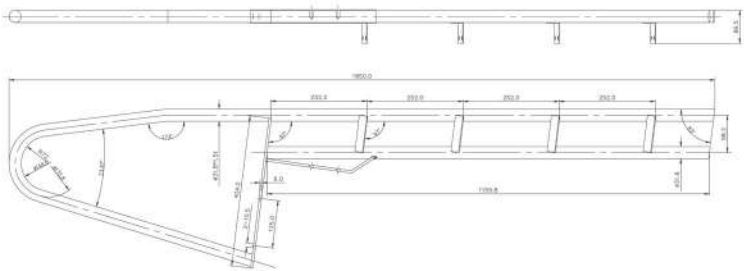
• XK5304L



• XK5304R

Aluminum Dock Ladders

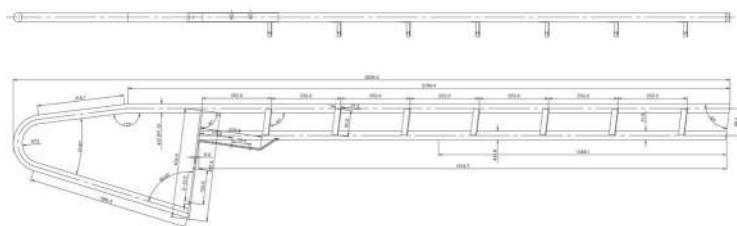
Part No.	Step	Length mm
XKP4	4	1850



## Stainless Steel Dock Ladders With Teak Steps

- Made of mirror polished stainless steel.

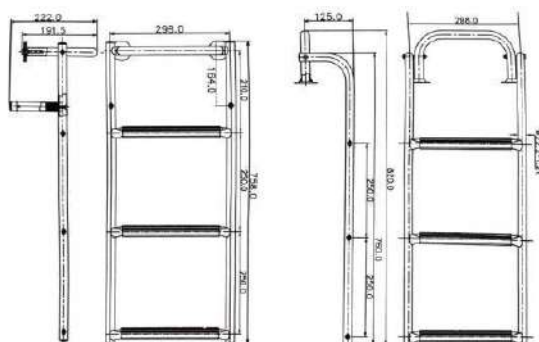
Part No.	Step	Length mm
XKP7	7	2606



## Boat Transom Ladders

- Made of mirror polished stainless steel.

Part No.	Step mm	Deployed mm	Width Centrum mm
XK7114SG3	3	820	300
XK7114SR2	short 2	490	292
XK7114SR3	Long 3	635	292



## Transom Ladder

- Made of mirror polished stainless steel.

Part No.	Length mm	Width mm
XK9231SMH	390	215



# Platforms



## Teak Boat Platforms

Part No.	Width mm	Length mm	Ladder
XK03519514	450	390	Without ladder
XK03519514+7335SAOR	450	390	3



• XK03519514



• XK03519514+7335SAOR

## Teak Bowsprits With Ladder

Part No.	Length ×Width mm	Dia.of Tube mm	Ladder
XK4135SA	500×350	32	Without ladder
XK4135SA+7325SAOR	500×350	32	2
XK4135SA+7335SAOR	500×350	32	3



• XK4135SA



• XK4135SA+7335SAOR



• XK4135SA+7325SAOR

## Teak Bowsprits With Ladder

Part No.	Length ×Width mm	Dia.of Tube mm	Ladder
XK4042SA	650×330	25	Without ladde
XK4042SA+7325SAOR	650×330	25	2
XK4042SA+7335SAOR	650×330	25	3



• XK4042SA



• XK4042SA+7335SAOR



• XK4042SA+7325SAOR

## Teak Bowsprits

Part No.	Size mm	Tube Dia. mm	
XK4078SA	700×480	32	
XK4078SA1	700×480	32	With bow roller



• XK4078SA



• XK4078SA1

## Teak Bowsprits

Part No.	Size mm	Tube Dia. mm	
XK4071SA	1200×520	32	With bow roller
XK4071SAX	1200×520	42	With bow roller
XK4071SAXL	1400×625	42	With bow roller



• XK4071SA



• XK4071SAX



• XK4071SAXL



## Boat Platforms

Part No.	Tube mm	Length mm	Width
XK4030SA	25	530	430
XK4034SA	25	650	470



• XK4030SA • XK4034SA

## Boat Platforms

Part No.	Width mm	Dia. of Tube mm	Length mm
XK03501061	270	25	390
XK03501074	210	25	390
XK03501068	450	25	500
XK03501900	380	25	450



• XK03501061 • XK03501074 • XK03501068 • XK03501900

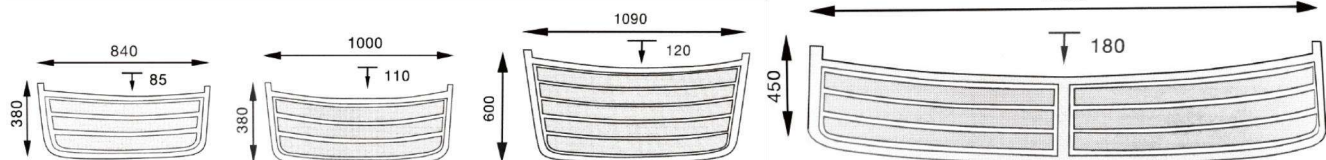
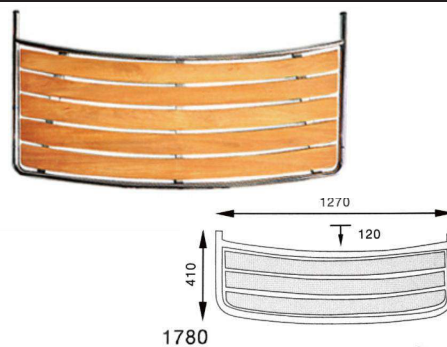
## Transom Platforms With Telescopic Ladder

Part No.	Width mm	Length mm	Tube Dia. mm
XK4011	840	380	25
XK4012	1000	380	32



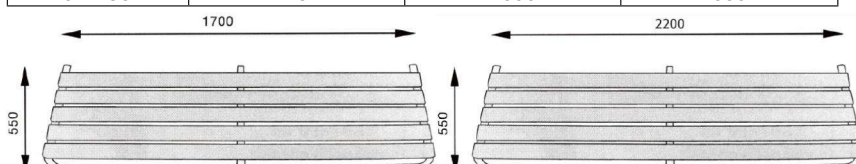
## Stern Platform, Teak Wood

Part No.	Tube mm	Length mm	Width mm
XK02-271SA	25	840	380
XK02-272SA	32	1270	410
XK02-273SA	25	1000	380
XK02-274SA	32	1090	600
XK02-275SA	32	1310	600
XK02-276SA	32	1780	450



## Stern Platform, Teak Wood

Part No.	Tube mm	Length mm	Width mm
XK02-281SA	25	1300	550
XK02-282SA	25	1700	550
XK02-283SA	25	2000	550



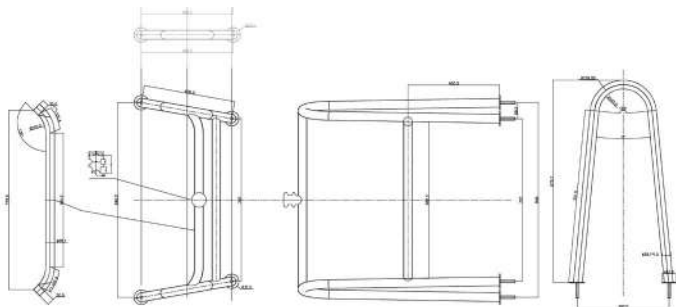
# Ski Tow Bars & Roll Bars



## Ski Tow Bar

- Made of mirror polished stainless steel.

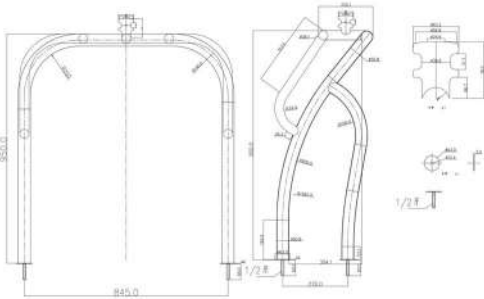
Part No.	Length mm	Width mm	Height mm
XK3410S	846	400	879



## Ski Tow Bar

- Made of mirror polished stainless steel.

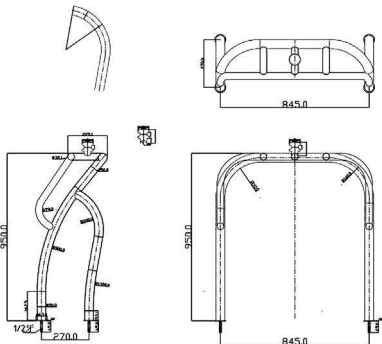
Part No.	Length mm	Width mm	Height mm
XK3415S	845	270	950



## Ski Tow Bar

- Made of mirror polished stainless steel.

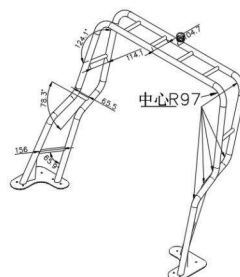
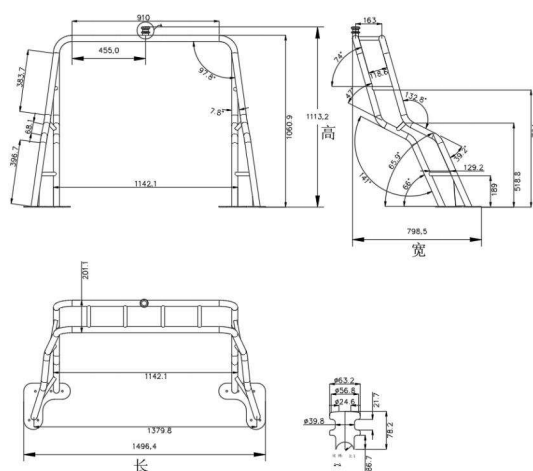
Part No.	Length mm	Height mm	Width mm
XK3412S	845	950	270



## Roll Bar

- Made of mirror polished stainless steel.

Part No.	Length mm	Height mm	Width mm
XK3411S	1142	1113	798.5



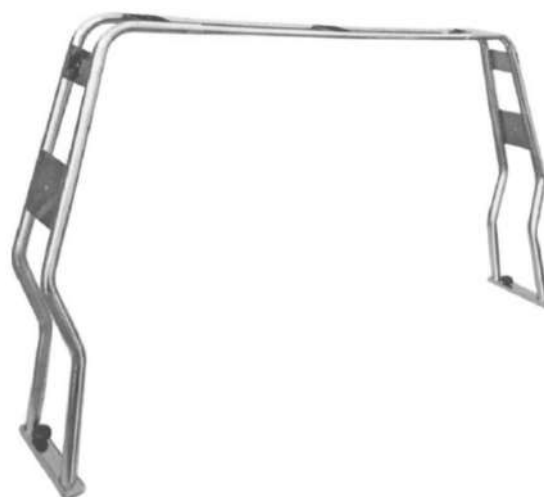
## Roll Bar

- Made of mirror polished stainless steel.

Part No.	Width Adjust	Height mm
XK40091S	1700 - 2050	1200
XK40094S	1700 - 2050	1200



- XK40094S



- XK40091S

# Cup Holders



## Foldable Cup Holder, Adjustable

- Made of mirror polished stainless steel.

Part No.	Length mm	Depth mm	Width mm	Type
XK9931S	100	20.5	100	Fixed
XK9936S	100	20.5	100	Rail type



• XK9931S



• XK9936S

## Drink Holders

- Made of mirror polished stainless steel.

Part No.	O.D mm	Thread studs	Ring
XK3098SAS	18×105	18×51	1 Ring
XK3098SAM	18×105	18×51	2 Ring



## Can Holders

- Made of mirror polished stainless steel.

Part No.	I.D mm	Height mm	LED Color
XK9682	90	83	Standard
XK9682SR	90	83	Red light
XK9682SW	90	83	White light
XK9682SB	90	83	Blue light
XK9682SG	90	83	Green light





## Ring Cup Holder



Part No.	Length mm	Depth mm	Ring Size mm
XK0436S	116	88	88

## Ring Cup Holder



Part No.	Top ring I.D	Height mm
XK0437S	88	110

## The Ashtray



Part No.	Color
XK2911SB	Blue
XK2911SR	Red

## Boat Launching Wheels

- Made of mirror polished stainless steel.

Part No.	Type	Desc.
XK0211S	Adjustable	"Rubber boat carrier folding model. Made in S.Steel square pipe with two 40cm wheel"
XK0212S	Straight	"Rubber boat carrier folding model. Made in S.Steel square pipe with two 40cm wheel"



## Stainless Steel Outboard Motor Lock

- Made of mirror polished stainless steel.

Part No.	Length × Height mm
XK2905S	304×42



## Gas Spring Fixing Plates

### Screw Connection

XK03580198



Size mm: 48×58 mm

XK03580201



Size mm: 45×35 mm

XK03580199



Size mm: 48×32 mm

XK03580203



Size mm: 35×25 mm

XK03580200



Size mm: 48×32 mm

### Ball Connection

XK03580205



Size mm: 48×58 mm

XK03580202



Size mm: 45×35 mm

XK03580206



Size mm: 48×32 mm

XK03580204



Size mm: 35×25 mm

XK03580207



Size: 48×32 mm

# Rod Holders



## Stainless Steel Rod Holder

- Made of mirror polished stainless steel.

Part No.	Flange	Liner O.D mm	Length mm
XK7739S - 15	15 degree	50.8	229
XK7739S - 30	30 degree	50.8	229
XK7739S - 45	45 degree	50.8	229
XK7739S - 90	90 degree	50.8	229



## Stainless Steel Rod Holder

- Made of mirror polished stainless steel.

Part No.	Flange	Liner O.D mm	Length mm
XK7745S - 15	15 degree	50.8	229
XK7745S - 30	30 degree	50.8	229
XK7745S - 90	90 degree	50.8	229



## Square Flush Rod Holder

- Made of mirror polished stainless steel.

Part No.	Flange	Liner O.D mm	Length mm
XK0039 - 15	15 degree	45	220
XK0039 - 30	30 degree	45	220
XK0039 - 90	90 degree	45	220



## Stainless Steel Clamp-On Rod Holder, Newtype

- Made of mirror polished stainless steel.

Item No.	Suitable Tube Size mm	O.D mm	Length mm
XK6577	22 - 25	50.8	265
XK6578	25 - 32	50.8	265
XK6579	32 - 51	50.8	265



• XK6577



• XK6578



• XK6579



## Stainless Steel Adjustable Outrigger Rod Holder

- Made of mirror polished stainless steel.

Part No.	I.D mm	Total Height	Rod
XK9983S	42	400	1 Rod
XK9963	42	400	3 Rod



• XK9983S



• XK9963

## Stainless Steel Bracket Launcher 4 Rod

- Made of mirror polished stainless steel.

Part No.	Rod holder O.D mm	Length mm	Rod angle
XK9976S	50.8	927	Horizontal



## Rod Holder

- Made of mirror polished stainless steel.

Part No.	Flange	Liner O.D mm	Length mm
XK3069 - 15	15 degree	50.8	229
XK3069 - 30	30 degree	50.8	229
XK3069 - 90	90 degree	50.8	229



• XK3069 - 15



• XK3069 - 30

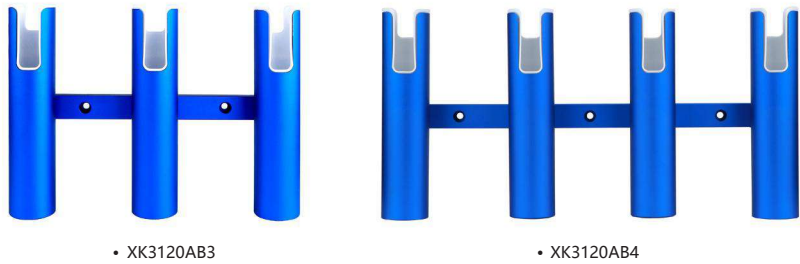


• XK3069 - 90

Rod Holders

Aluminum Fishing Rod Holder, Blue

Part No.	O.D mm	Height mm	Length mm	Rod
XK3120AB3	48	220	300	3 Rod
XK3120AB4	48	220	435	4 Rod



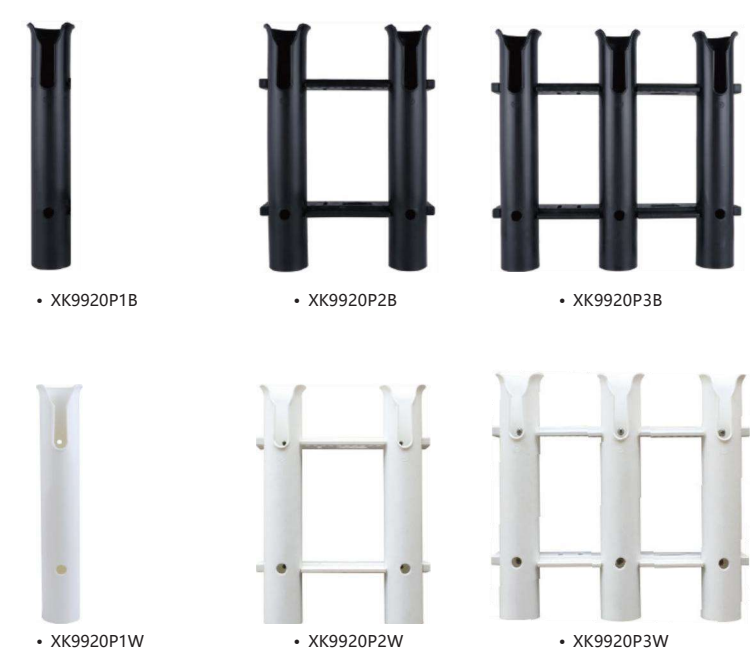
Aluminum Fishing Rod Holders, Silver

Part No.	O.D mm	Height mm	Length mm	Rod
XK3120AA3	48	220	300	3 Rod
XK3120AA4	48	220	435	4 Rod



Nylon Rod Holder

Part No.	Color	Length mm	Height mm	O.D mm
XK9920P1B	Black	60	300	48
XK9920P2B	Black	223	300	48
XK9920P3B	Black	325	30.0	48
XK9920P1W	White	60	300	48
XK9920P2W	White	223	300	48
XK9920P3W	White	325	300	48





## Aluminum Fishing Rod Holder, Blue

Part No.	O.D mm	Height mm	Length mm	Rod
XK3120AB3H	48	220	300	3 Rod
XK3120AB4H	48	220	435	4 Rod



• XK3120AB3H



• XK3120AB4H

## Aluminum Fishing Rod Holders, Silver

PartNo.	O.D mm	Height mm	Length mm	Rod
XK3120AA3H	48	220	300	3Rod
XK3120AA4H	48	220	435	4Rod



• XK3120AA3H



• XK3120AA4H

## Removable Rod Holder

- Made of mirror polished stainless steel.

Part No.	O.D mm	Tube Length mm
XK7740S	50.8	215



• XK7740S

## Clamp-On Rod Holder

- Made of mirror polished stainless steel.

Part No.	Suitable Tube Size mm	O.D mm	Length mm
XK7744SN	22 - 25	50.8	230
XK7744SLN	25 - 32	50.8	230
XK7755S	32 - 51	50.8	230



• XK7744SN



• XK7744SLN



• XK7755S

Rod Holders

Clamp-On Rod Holder

- Made of mirror polished stainless steel.

Part No.	Suitable Tube Size mm	O.D mm	Length mm
XK7744SN - 1	22 - 25	50.8	229



Rail Rod Holder

- Made of mirror polished stainless steel.

Part No.	Suitable Tube Size mm	O.D mm	Length mm
XK3122	22 - 25	50.8	168
XK3122L	25 - 32	50.8	168



Rail Mount Rod Holders

- Made of mirror polished stainless steel.

Part No.	Suit For Rail mm
XK3121S25	25
XK3121S32	32



3 Way Adjustable Rod Holders

- Made of mirror polished stainless steel.

Part No.	Pole Size mm	Rod	Direction
XK3123S	32	1 Rod	Normal
XK3123SL	32	3 Rod	Left
XK3123SR	32	3 Rod	Right



## Fishing Rod Holder

- Made of mirror polished stainless steel.

Part No.	Length mm	O.D mm	Type
XK7743S	250	50.8	Fixed
XK7733S	250	50.8	Removable



• XK7743S



• XK7733S

## Stainless Steel Fishing Rod Racks

- Made of mirror polished stainless steel.

Part No.	O.D mm	Height mm	Length mm	Rod
XK3120S3	45	220	267	3 Rod
XK3120S4	45	220	384	4 Rod
XK3120S5	45	220	500	5 Rod
XK3120S6	45	220	600	6 Rod
XK3120S8	45	220	820	8 Rod



• XK3120S8



• XK3120S3



• XK3120S4



• XK3120S5



• XK3120S6

## 5 Rod Holders Rail Mount

- Made of mirror polished stainless steel.

Part No.	Length mm	Width mm	Tube mm
XK9668S5	254	823	38 or 41



## Multiple Tubes Fishing Rod Holders

- Made of mirror polished stainless steel.

Part No.	Length mm	Height mm	Rod
XK3119S3	279	235	3 Rod
XK3119S4	343	235	4 Rod



• XK3119S3



• XK3119S4

## Rod Holders / Motor Brackets

### Clamp-On Rod Holder

- Made of mirror polished stainless steel.

Part No.	Size mm	I.D mm	Length mm
XKAM6676	22 - 25	42	248
XKAM6677	32 - 38	42	248
XKAM6678	45 - 51	42	248



### Clamp-On Rod Holder

- Made of mirror polished stainless steel.

Part No.	Size mm	I.D mm	Length mm
XK9984SS	22 - 25	42	254
XK9984SM	32 - 38	42	254
XK9984SL	45 - 51	42	254



### Stainless Steel Outrigger Rod Holder

- Made of mirror polished stainless steel.

Part No.	O.D mm	Height mm
XK9982S	50.8	25 - 32
XK9568S2	50.8	35 - 40



• XK9982S

• XK9568S2

### Adjustable Rod Holders

- Made of mirror polished stainless steel.

Part No.	O.D mm	Suitable Tube Size mm
XK8201SA	50.8	
XK8201SR	50.8	
XK8205SR	50.8	25 - 32



• XK8201SA

• XK8201SR

• XK8205SR



# Motor Brackets



## Aluminum Motor Brackets

Part No.	Motor	Bracket
XK7953AW	15HP or 30kg	Wood pad
XK7953AA	15HP or 30kg	Plastic pad



• XK7953AW



• XK7953AA

## Stainless Steel Motor Brackets

Part No.	Motor	Bracket
XK7952S	Up to 7.5HP or 20kg	Black plastic pad
XK7952SW	Up to 7.5HP or 20kg	Wood pad
XK7951S	Up to 20HP or 40kg	Black plastic pad
XK1004S	Up to 10HP or 30kg	Black plastic pad



• XK7951S



• XK7952S



• XK7952SW



• XK1004S

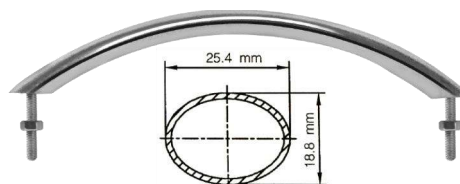
# Handrails



## Oval Handrail

- Made of mirror polished stainless steel.

Part No.	Height × Length mm	Tube Dia. mm
XK04 - 612SA	200	25×18.8
XK04 - 616SA	300	25×18.8



## Oval Handrail

- Made of mirror polished stainless steel.

Part No.	Height × Length mm	Tube Dia. mm
XK9968S8	229	25.4
XK9968S12	305	25.4
XK9968S16	406	25.4



## Round Handrail

- Made of mirror polished stainless steel.

Part No.	Height × Length mm	Tube Dia. mm
XK0451S	285	25.4



## Round Handrail

- Made of mirror polished stainless steel.

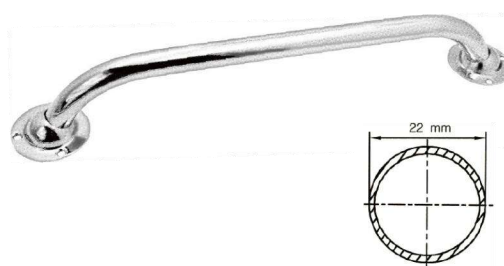
Part No.	Length mm	Tube Dia. mm	Stud mm
XK9602SR	300	22	6
XK9603SR	450	22	6
XK9604SR	600	22	6



## Round Handrail

- Made of mirror polished stainless steel.

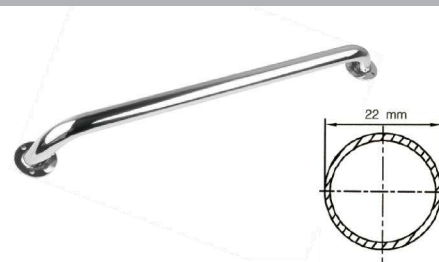
Part No.	Length mm	Tube Dia. mm
XK2030S8	200	22
XK2030S12	300	22
XK2030S16	400	22
XK2030S20	500	22
XK2030S24	600	22
XK2030S32	800	22
XK2030S40	1000	22



## Round Handrail, Welded Round Base

- Made of mirror polished stainless steel.

Part No.	Length mm	Tube Dia. mm
XK04 - 202SA	200	22
XK04 - 204SA	300	22
XK04 - 206SA	500	22
XK04 - 208SA	800	22
XK04 - 210SA	1000	22



## Grab Rail

- Made of mirror polished stainless steel.

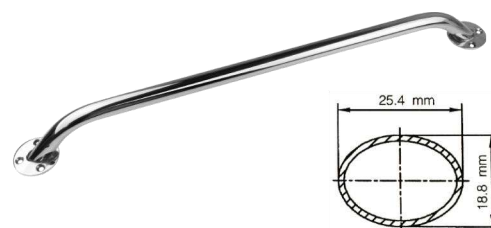
Part No. M6	Part No. M8	Length mm	Tube Dia. mm	Degree
XK04 - 130SA6	XK04 - 130SA8	300	25	45 degree
XK04 - 145SA6	XK04 - 145SA8	450	25	45 degree
XK04 - 160SA6	XK04 - 160SA8	600	25	45 degree
XK04 - 175SA6	XK04 - 175SA8	750	25	45 degree
XK04 - 190SA6	XK04 - 190SA8	900	25	45 degree
XK04 - 131SA6	XK04 - 131SA8	300	25	90 degree
XK04 - 156SA6	XK04 - 156SA8	450	25	90 degree
XK04 - 164SA6	XK04 - 164SA8	600	25	90 degree
XK04 - 176SA6	XK04 - 176SA8	750	25	90 degree
XK04 - 191SA6	XK04 - 191SA8	900	25	90 degree



## Oval Handrail, Round Base Screwed

- Made of mirror polished stainless steel.

Part No.	Overall Length mm	Base Size mm	Tube Dia. mm
XK2070SA	229	57	25×18.8
XK2071SA	305	57	25×18.8
XK2072SA	406	57	25×18.8
XK2073SA	457	57	25×18.8
XK2074SA	610	57	25×18.8



## Round Handrail With Finger

- Made of mirror polished stainless steel.

Part No.	Overall Length mm	Tube Dia. mm
XK2055RS	220	25×18.8
XK2056RS	305	25×18.8
XK2061RS	407	25×18.8
XK2062RS	457	25×18.8
XK2060RS	610	25×18.8



## Handrail With Base

- Made of mirror polished stainless steel.

Item No	Overall Length mm	Base Size mm	Tube Dia. mm
XK2075SA	229	55×32.4	25
XK2076SA	305	55×32.4	25
XK2077SA	406	55×32.4	25
XK2078SA	457	55×32.4	25
XK2079SA	610	55×32.4	25



## Handrails

### Oval Handrail

- Made of mirror polished stainless steel.

Part No.	Overall Length mm	Base Size mm	Tube Dia. mm
XK7870SO	305	63×32	25×18.8
XK7872SO	406	63×32	25×18.8
XK7873SO	457	63×32	25×18.8
XK7875SO	610	63×32	25×18.8



### Heavy Duty Oval Handrail

- Made of mirror polished stainless steel.

Part No.	Overall Length mm	Tube Dia. mm
XK2054S	219	25×18.8
XK2050S	305	25×18.8
XK2051S	406	25×18.8
XK2052S	457	25×18.8
XK2053S	610	25×18.8



### Heavy Duty Oval Handrail

- Made of mirror polished stainless steel.

Part No.	Overall Length mm	Tube Dia. mm
XK2054SB	219	25×18.8
XK2050SB	305	25×18.8
XK2051SB	406	25×18.8
XK2052SB	457	25×18.8
XK2053SB	610	25×18.8



### Casted Oval Handrail, Heavy

- Made of mirror polished stainless steel.

Part No.	Length mm	Tube Size mm	Stud
XK03501612	1316SA12	13×33	M6
XK03501618	1316SA18	13×33	M6
XK03501624	1316SA24	13×33	M6
XK03501718	1317SA18	20×40	M6
XK03501724	1317SA24	20×40	M6
XK03501730	1317SA30	20×40	M6
XK03501736	1317SA36	20×40	M6
XK03501748	1317SA48	20×40	M6
XK03501760	1317SA60	20×40	M6



### Grab Handles

- Made of mirror polished stainless steel.

Part No.	Length mm	Width mm	Height mm
XK31188	270	130	25
XK31188W	270	130	25





## Rub Strake

- Made of mirror polished stainless steel.

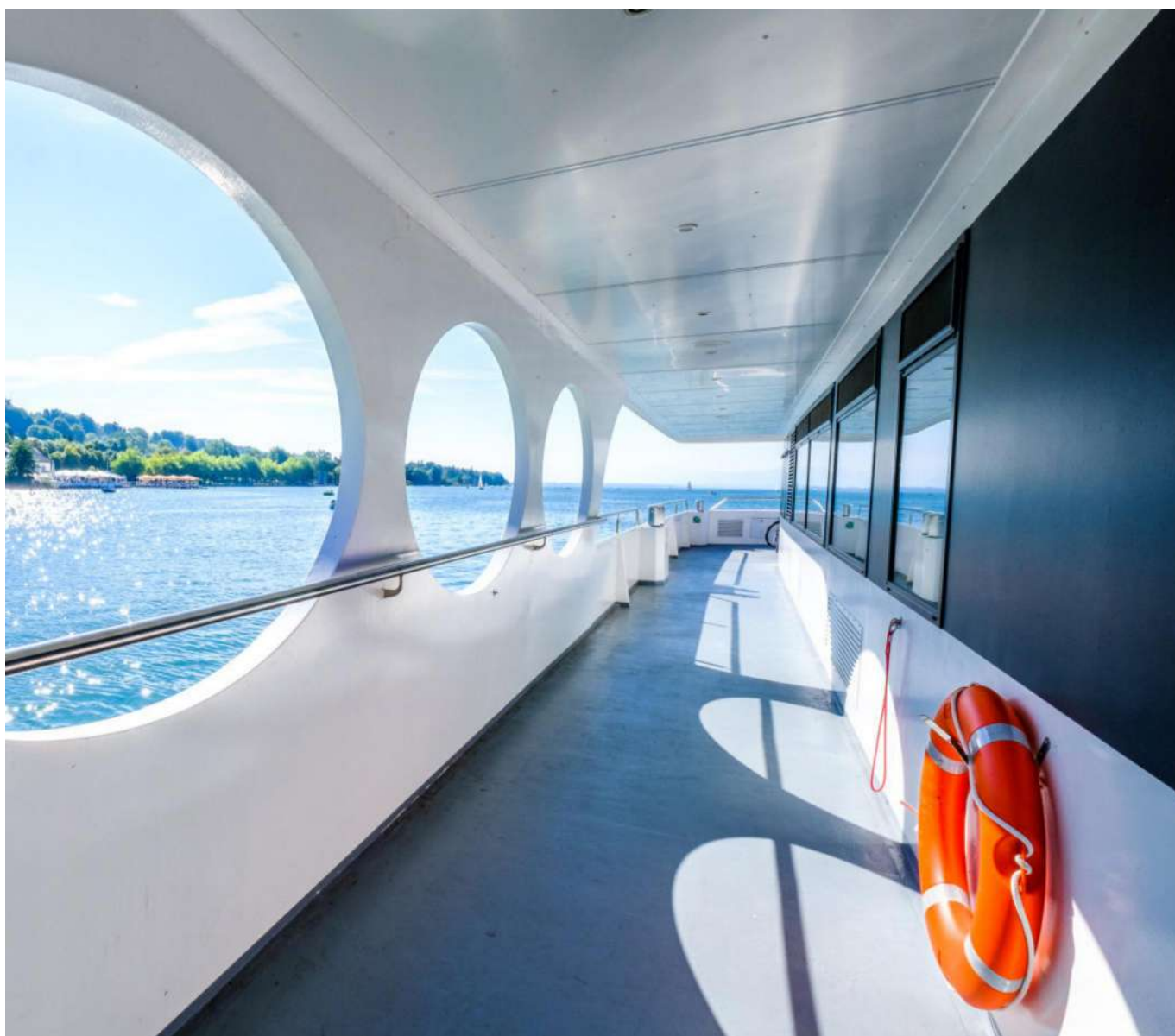
Part No.	Width mm	Length mm
XK2090SA	19	203
XK2091SA	19	304
XK2092SA	19	457
XK2093SA	19	610
XK2090SA1	25	203
XK2091SA1	25	304
XK2092SA1	25	457
XK2093SA1	25	610



## Rub Strake

- Made of mirror polished stainless steel.

Part No.	Width	Gauge	Length mm	Screw
XK04 - 039SA	19	2	3.65	8 #
XK04 - 041SA	25	2	3.65	10 #
XK04 - 043SA	32	2	3.65	10 #
XK04 - 045SA	38	2	3.65	10 #



# Steering Wheels



## Steering Wheel



- Made of mirror polished stainless steel.

Part No.	Size	Dish
XK9103S	13.5"	25 degree
XK9103SRF1	13.5"	25 degree
XK9102S	15.5"	25 degree

## Steering Wheel



• XK9108SF

• XK9108SF1

• XK9108S

- Made of mirror polished stainless steel.

Part No.	Size	Dish
XK9108SF	11"	25 degree
XK9108SF1	11"	25 degree
XK9108S	11"	25 degree

## Steering Wheel



- Made of mirror polished stainless steel.

Item No.	Size
XK72215S	13.5"
XK72215SRF1	With knob

## Steering Wheel



- Made of mirror polished stainless steel.

Part No.	Size	Dish
XK9500S	13.5"	15 degree

## Steering Wheel



- Made of mirror polished stainless steel.

Part No.	Size	Dish
XK7319SR	13.5"	25 degree
XK7320SR	15.5"	25 degree

## Steering Wheel



- Made of mirror polished stainless steel.

Part No.	Size	Dish
XK7316SR	13.5"	25 degree
XK7315SR	15.5"	25 degree

## Steering Wheel With Knob



- Made of mirror polished stainless steel.

Part No.	Size	Dish
XK9500F1	13.5"	25 degree

## Steering Wheel With Knob



- Made of mirror polished stainless steel.

Part No.	Size	Dish
XK7319SRF1	13.5"	25 degree
XK7320SRF1	15.5"	25 degree

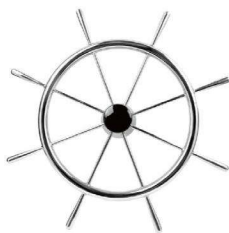
## Steering Wheel With Knob



- Made of mirror polished stainless steel.

Part No.	Size	Dish
XK7316SRF1	13.5"	25 degree
XK7315SRF1	15.5"	25 degree
XK7314SRF1	13.5"	25 degree
XK7310SRF1	15.5"	25 degree

### Sailing Type Steering Wheel



- Made of mirror polished stainless steel.

Part No.	Size	Dish
XK9200	16"	3/8"

### Steering Wheel With PU Foam Cover



- Made of mirror polished stainless steel.

Item No.	Size	Dish
XK9989SB	13.5"	15 degree

### Steering Wheel With PU Foam Cover



• XK9108SBF

• XK9108SBF1

• XK9108SB

- Made of mirror polished stainless steel.

Part No.	Size	Dish
XK9108SBF	11"	25 degree
XK9108SBF1	11"	25 degree
XK9108SB	11"	25 degree

### Steering Wheel With PU Foam Cover



- Made of mirror polished stainless steel.

Part No.	Size	Dish
XK9988SB	13"	15 degree

### Steering Wheel With PU Foam Cover



- Made of mirror polished stainless steel.

Part No.	Size	Dish
XK9103SB	13.5"	25 degree
XK9102SB	15.5"	25 degree

### Steering Wheel With PU Foam Cover



- Made of mirror polished stainless steel.

Part No.	Size	Dish
9103SBF1	13.5"	25 degree
9102SBF1	15.5"	25 degree

### Steering Wheel With PU Foam Cover



- Made of mirror polished stainless steel.

Part No.	Size	Dish
XK9901SBF1	13.5"	25 degree

### Stainless Steel Steering Wheel Knob



• XK7300S



• XK7300S1



• XK7300S2

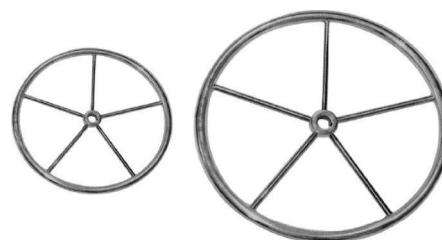
- Made of mirror polished stainless steel.v

Part No.	Size
XK7300S	3/4"-1"
XK7300S1	3/4"-1"
XK7300S2	3/4"-1"

### Sailboat Steering Wheel

- Made of mirror polished stainless steel.

Part No.	Size	W	Spoke
XK7500S	24"	7/8"	1/2"×5
XK7501S	26"	7/8"	1/2"×5
XK7502S	28"	7/8"	1/2"×5
XK7503S	30"	7/8"	1/2"×5
XK7504S	32"	7/8"	1/2"×5
XK7505S	34"	7/8"	1/2"×5
XK7506S	36"	7/8"	1/2"×5



# Life Ring Holders



## Life Ring Holder

- Made of mirror polished stainless steel.

Part No.	Suitable Tube Size mm
XK2921S	42



## Life Ring Holder

- Made of mirror polished stainless steel.

Part No.	Suitable Tube Size mm
XK2930S	42



## Boat Hook

- Made of mirror polished stainless steel.

Part No.	Length mm	Suitable Tube Size mm
XK7715S	42	25



## Life Ring Holder

- Made of mirror polished stainless steel.

Part No.	Suitable Tube Size mm
XK2937S	22 - 25



## Boat Hook

- Made of mirror polished stainless steel.

Part No.	Length mm	Hook Dia.
XK7716S	178	102





# Fasteners



## Hasp And Staple

- Made of mirror polished stainless steel.

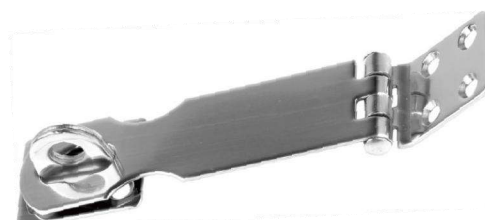
Part No.	Length mm	Width mm
XK7750S	70	25
XK7751S	95	25



## Hasp And Staple

- Made of mirror polished stainless steel.

Part No.	Length mm	Width mm
XK7753S	70	25
XK7754S	95	25



## Locking Hasp And Staple

- Made of mirror polished stainless steel.

Part No.	Length mm	Width mm
XK7752S	76	25



## Stainless Steel Toggle Latch

- Made of mirror polished stainless steel.

Part No.	Length mm	Width mm
XK0701SA	105	50



## Hold Down Clamp

- Made of mirror polished stainless steel.

Part No.	Length × Width mm
XK0462SA	102



## Hatch Support Spring

- Made of mirror polished stainless steel.

Part No.	Dia. mm	Length mm
XK2912	11	210
XK2913	14.5	260



## Fasteners

### Liferaft Cradle

- Made of surface sandblasting stainless steel.

Part No.	Length mm	Width mm
XK75576	70 - 90	42 - 65



### Liferaft Cradle

- Made of mirror polished stainless steel.

Part No.	Length mm	Width mm
XK7557S	750	520



### Stainless Steel Toggle Latches

- Rope Splicing Fid.

Part No.	Length mm
XK2932S	170
XK2932M	280
XK2932L	390



• XK2932S

• XK2932M

• XK2932L

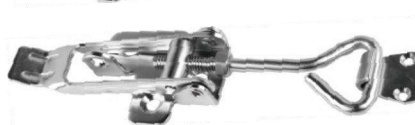
### Stainless Steel Toggle Latches

- Made of mirror polished stainless steel.

Part No.	Size mm	Length Adjusted mm	B mm
XK2925SE	76	65 - 75	18
XK2925ME	125	115 - 125	25
XK2925LE	180	160 - 180	35



• XK2925SE



• XK2925ME



• XK2925LE

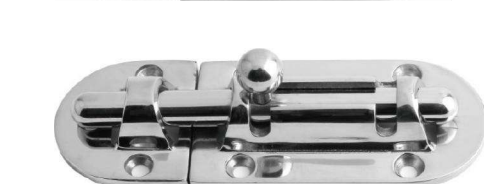
### Heavy Duty Barrel Bolt

- Made of mirror polished stainless steel.

Part No.	Length mm	Width mm
XK1209S	89	38
XK1209M	108	38
XK1209L	132	38



• XK1209S



• XK1209M

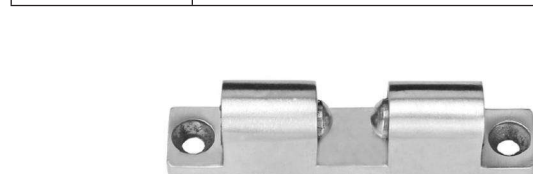


• XK1209L

### Stainless steel stud catch, casting

- Made of mirror polished stainless steel.

Part No.	Base Size mm
XK3019S	9×50

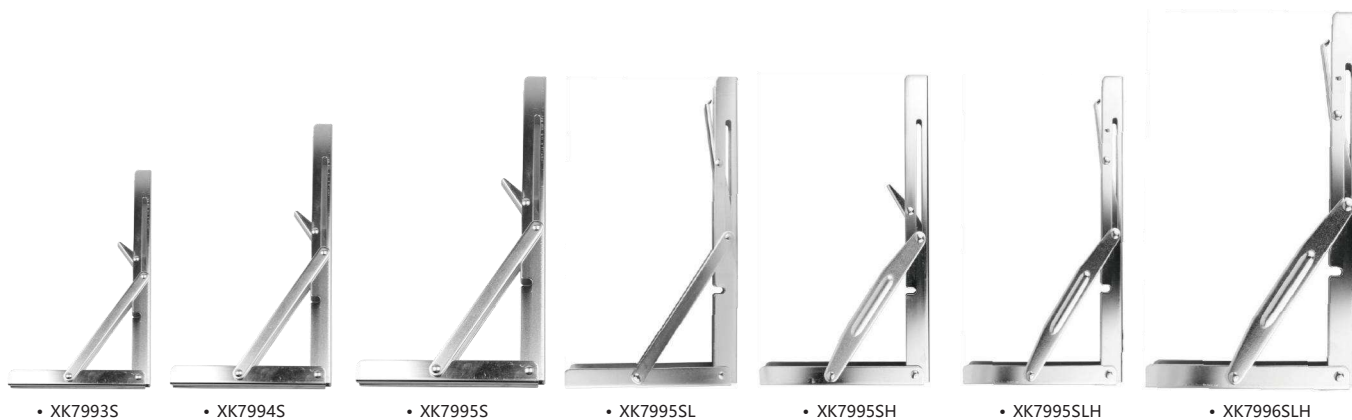


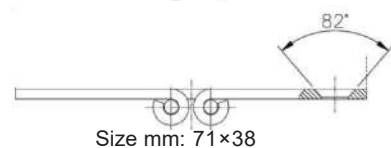
## Folding Brackets

- Made of mirror polished stainless steel.

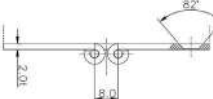
Part No.	Length mm	Height mm	Max.load
XK7993S	203	104	150 kg
XK7994S	254	137	150 kg
XK7995S	305	165	150 kg
XK7995SH	305	165	250 kg
XK7995SL	305	165	150 kg
XK7995SLH	305	165	250 kg
XK7996S	356	170	150 kg
XK7996SH	356	170	250 kg
XK7996SL	356	170	150 kg
XK7996SLH	356	170	250 kg

Part No.	Length mm	Height mm	Max.load
XK7993SB	203	104	50 kg
XK7994SB	254	137	60 kg
XK7995SB	305	165	80 kg
XK7995SHB	305	165	100 kg
XK7995SLHB	305	165	100 kg
XK7996SB	356	170	100 kg
XK7996SHB	356	170	120 kg
XK7996SLHB	356	170	120 kg

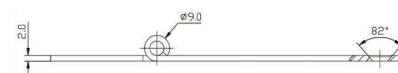




Size mm: 71×38



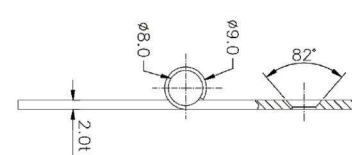
Size mm:70 ×41



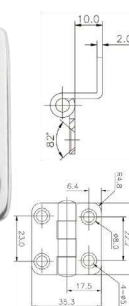
Size mm:40 × 130



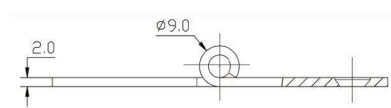
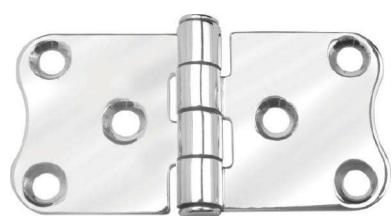
Size mm: 70×41



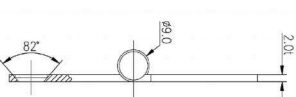
Size mm: 76×37



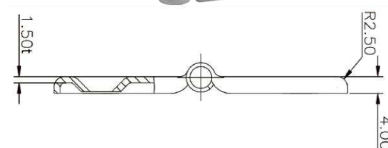
Size mm: 36.5×35.3



Size mm: 75×38



Size mm: 70×75

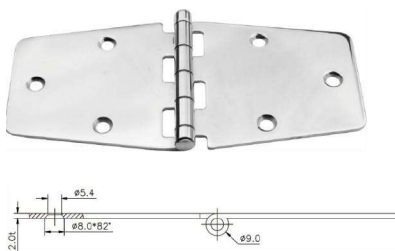


Size mm: 70.5×52



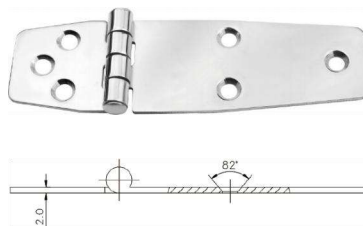


**XK7431S**



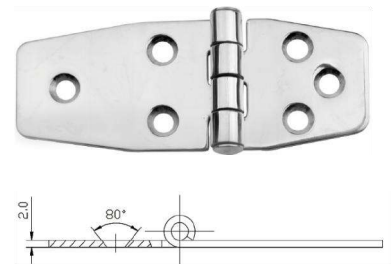
Size mm: 152×76

**XK7436S**



Size mm: 36.5×126

**XK7437S**



Size mm: 36.5×86.8

**XK7409SA**



Size mm: 60×74

**XK7608S**



Size mm: 40×100

**XK7420SAC**



Size mm: 37×35.7×2

**XK7466SAC**



Size mm: 70×75

**XK7433SAC**



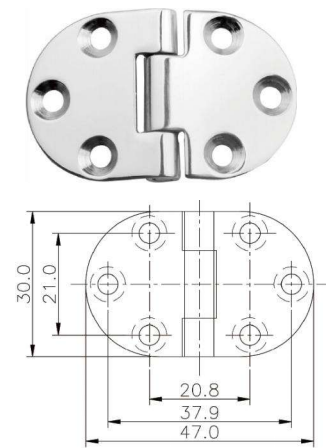
Size mm: 37×76

**XK7422SAC**



Size mm: 37×57×2

Hinges



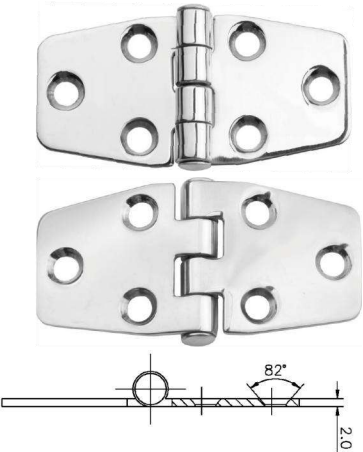
Part No.	Size mm	Type
XK7481SA	47×30	
XK7481SAV	47×30	



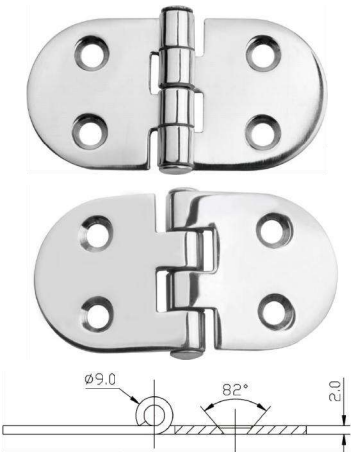
Part No.	Size mm
7605SA	40×60×2
7605SAV	40×60×2



Part No.	Size mm	Type
7420SA	37×35.7	
7420SAV	37×35.7	



Part No.	Size mm	Type
XK7419S	37×76	
XK7419SAV	37×76	



Part No.	Size mm	Type
XK7443S	38×74	
XK7443SAV	38×74	



Part No.	Size mm	Type
XK7476S	67×38	
XK7476SAV	67×38	



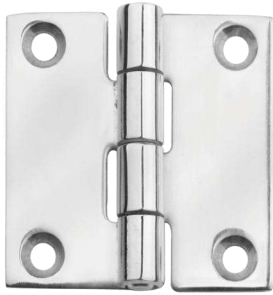
Item No.	Size mm	Type
XK7444SA	38×108	
XK7444SAV	38×108	



Part No.	Size mm	Type
XK7432S	38×178	
XK7432SV	38×178	



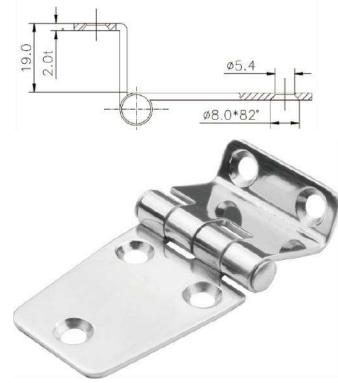
Part No.	Size mm	Type
XK7428SA	38.1×143	
XK7428SAV	38.1×143	



Part No.	Size mm
XK7606S	39.4×39.5
XK7605S2	40×45
XK7450S2	40×60



Part No.	Size mm
XK7447S	28×106
XK7448S	28×132
XK7449S	28×158



Part No.	Size mm
XK7425S	66×36×12.7
XK7424S	66×36×16
XK7423S	66×36×19





# Vents & Lift Handles



## Stainless Steel Pull Ring,Stamped



- It is made from grade 304 stainless steel for maximum corrosion resistance and durability.

Part No.	Height mm	Width mm	Length mm
XK1202S	11	56	66
XK1206S	11	44	38

## Midget Vent



- Marine Grade Stainless Steel, Mirror Polished. Perfect for Corrosion Resistance.
- UV and weather resistant and great for routing cables, wire, etc.

Part No.	Size mm
XK7724	43.3×42.4
XK7725	56.5×55.1

## Stainless Steel Lift Handle,Stamped



- It is made from grade 304 stainless steel for maximum corrosion resistance and durability.

Part No.	Height mm	Width mm	Length mm
XK2977	8.4	57	76

## Pull Ring,Casted



- Made of mirror polished stainless steel.

Part No.	Size mm	Type
XK3105	19	round

## Stainless Steel Pull Ring,Stamped



- It is made from grade 304 stainless steel for maximum corrosion resistance and durability.

Part No.	Height mm	Width mm	Length mm
XK1202S2	8.4	57	76

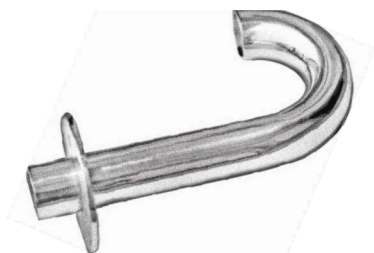
## Oval Drain Plug



- Made of mirror polished stainless steel.

Part No.	Size mm
XK1241	25

## Gooseneck Vent Pipe For Boat



- Made of mirror polished stainless steel.

Part No.	Size mm
XK13 - 222SA	22
XK13 - 235SA	35
XK13 - 250SA	50

## Round Louvered Vents



- Made of mirror polished stainless steel.

Part No.	Size mm
XK7726S	102
XK7726M	127

## Louvered Vents

- It is made of Stainless Steel. It has a Mirror finish, corrosion resistance, and durability for long-term service.

Part No.	Slots	Width x Height mm	Length mm
XK7727S3	3	111×38	210
XK7727S4	4	111×38	254
XK7727S5	5	111×38	327
XK7729S6	6	76×32	327
XK7729S7	7	76×32	378
XK7729S8	8	76×32	427
XK7729S10	10	76×32	527



• XK7727S3



• XK7727S4



• XK7727S5



• XK7727S6



• XK7727S7



• XK7727S8



• XK7727S10

## Louvered Vents

- It is made of Stainless Steel.
- It has marine-grade fine workmanship and is anti-corrosion, anti-rust, and has good durability.

Part No.	Size mm	Width mm
XK7721S	127	65
XK7722S	115	127
XK7720S	228	127
XK7723S	230	115



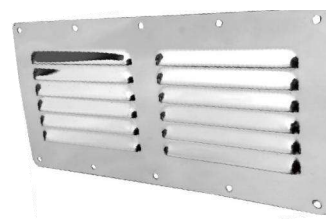
• XK7722S



• XK7721S



• XK7720S

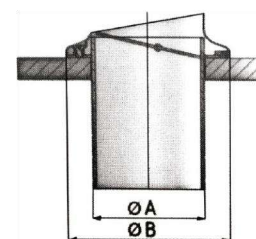


• XK7723S

## Transom Exhaust Outlets

- Made of mirror polished stainless steel.

Part No.	For Exhaust Hose mm
XK1851SA	40
XK1852SA	45
XK1853SA	51
XK1854SA	60
XK1855SA	76
XK1856SA	90
XK1857SA	100
XK1858SA	125
XK1859SA	150





# Bimini Hardware & Antenna Bases



## Bimini Top Eye Ends



XK4304SA •

• XK4302SA

- Made of mirror polished stainless steel.

Part No.	Length mm
XK4304SA	22
XK4302SA	25

## Bimini Top Jaw Slides



- Made of mirror polished stainless steel.

White insert	Suit Pipe MM
XK03464022A	22
XK03464025A	25

## Bimini Top Deck Hinge



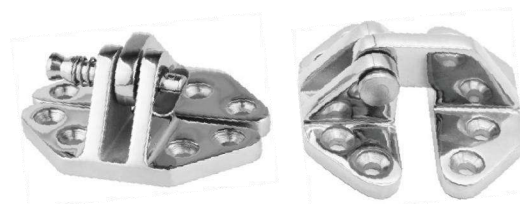
XK4321SA •

• XK4320SA

- Made of mirror polished stainless steel.

Part No.	Base Size mm	Revit Type	Length mm
XK4320SA	52×17	Screw pin	215
XK4321SA	52×17	Released pin	215

## Hatch Hinge



XKG50 •

• XKG60

- Made of mirror polished stainless steel.

Part No.	Height mm
XKG50	75×56
XKG60	82×76

## Stainless Steel Fixed Antenna Base, Thread of 1"-14



XK1163SL •

• XK1163SS

- Made of mirror polished stainless steel.

Part No.	Length mm	Base Dia.
XK1163SS	40	77
XK1163SL	105	77

### Rail Ratchet Antenna Mount



- Made of mirror polished stainless steel.

Part No.	Tube mm	Thread
XK1257	22 - 25	19 - 356

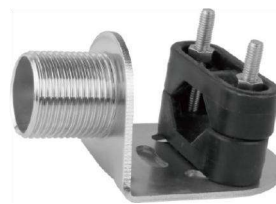
### Stainless Steel Rail Mount Antenna Bracket



- Made of mirror polished stainless steel.

Part No.	Tube mm	Thread
XK1256	22 - 25	19 - 356

### Stainless Steel Rail Mount Antenna Bracket



- Made of mirror polished stainless steel.

Part No.	Base Size mm
XK1618	22 - 25

### Rail Flag Pole



• XK2961S

• XK2917S

- Made of mirror polished stainless steel.

Part No.	Rail Diameter mm	Length mm	Diameter mm
XK2917S	22 - 25	356	12.7
XK2961S	22 - 25	356	12.7

### Stainless steel antenna mount extension



• XK1619C

• XK1619B

• XK1619A

- Made of mirror polished stainless steel.

Part No.	Length mm	Tube mm O.D mm
XK1619A	152	26.9
XK1619B	305	26.9
XK1619C	610	26.9

### Deck Filler With Key

- Made of mirror polished stainless steel.

Part No.	Size Code	Part No.	Size Code
XK4404S38	Fuel - 38	XK4401S38	Waste - 38
XK4404S50	Fuel - 50	XK4401S50	Waste - 50
XK4405S38	Diesel - 38	XK4402S38	Gas - 38
XK4405S50	Diesel - 50	XK4402S50	Gas - 50
XK4406S38	Water - 38	XK4403S38	Petrol - 38
XK4406S50	Water - 50	XK4403S5C	Petrol - 50



## Stainless Steel Grab Rails



- Made of mirror polished stainless steel.

Part No.	Length mm	Height mm	Tube Dia. mm
XK04 - 226SA	320	450	25
XK04 - 227SA	320	500	25
XK04 - 228SA	480	600	25
XK04 - 228SA	320	500	32
XK04 - 228SA	480	600	32

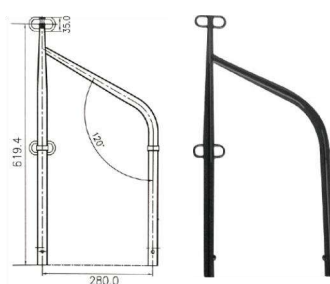
## Stanchions



- Made of mirror polished stainless steel.

Part No.	Length mm	Height mm
XK1643SA	325	610
XK1643SAL	325	740

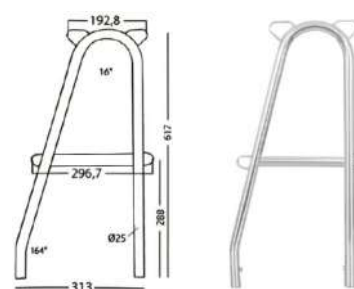
## Stanchion



- Made of mirror polished stainless steel.

Part No.	Length mm	Height mm
2945SAH	325	610

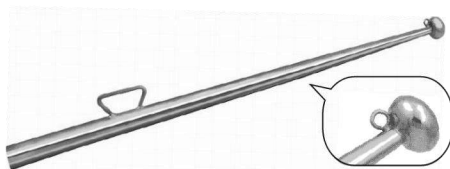
## Stanchion



- Made of mirror polished stainless steel.

Part No.	Length mm	Length mm
1643SAOB	313	615

## Flagpole



- Made of mirror polished stainless steel.

Part No.	Length mm	Diameter mm
XKK03466312	600	25.4
XKK03466313	750	25.4
XKK03466314	900	25.4
XKK03466315	1200	25.4

## Stanchion



- Made of mirror polished stainless steel.

Part No.	Length mm	Diameter mm
XKK03456542	465	25.4
XKK03456543	508	25.4
XKK03456545	610	25.4
XKK03456546	725	25.4

## Flagpole



- Made of mirror polished stainless steel.

Part No.	Length mm	Diameter mm
XKK03466412	600	20/25.4
XKK03466413	750	20/25.4
XKK03466414	900	20/25.4
XKK03466415	1200	20/25.4

# U-Bolts



## U-bolt

- Made of mirror polished stainless steel.

Part No.	Stock Dia.	Thread Length mm	Overall Length mm	C - C
XK2849S1	10	54	102	36
XK2851S1	10	79	127	36
XK2852S1	13	79	139	46
XK2853S1	13	67	122	46



## U-bolt

- Made of mirror polished stainless steel.

Part No.	Stock Dia.	Thread Length mm	Overall Length mm	C - C
XK7850S	8.3	76	108	36
XK7851S	8.3	89	127	36
XK7852S	11.3	89	108	46
XK7853S	11.3	76	121	46
XK7854S	11.3	99	145	46
XK7855S	11.3	89	168	46



## U-bolt

- Made of mirror polished stainless steel.

Part No.	Stock Dia.	Thread Length mm	Overall Length mm	C - C
XK2865SID	13	76	122	46
XK2867SID	13	64	109	46
XK2868SID	13	89	136	46
XK2872SID	16	76	155.4	48



## U-bolt

- Made of mirror polished stainless steel.

Part No.	Thread Length mm	Overall Length mm	C - C
XK2871S1D	127	203	48



U-Bolts

U-bolt

- Made of mirror polished stainless steel.

Part No.	Stock Dia.	Thread Length mm	Overall Length mm	C - C
XK2865SO	13	80	136	46
XK2867SO	13	120	166	46
XK2868SO	16	131	200	60
XK2872SO	16	91	160	60



U-bolt

- Made of mirror polished stainless steel.

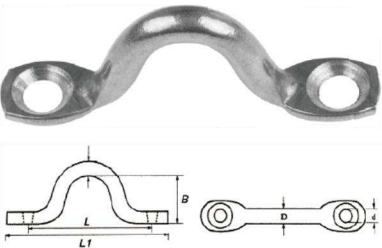
Part No.	Stock Dia.	Thread Length mm	Overall Length mm	C - C
XK2863S1	10	79	126	36
XK2864S1	10	54	101	36
XK2865S1	13	66	122	46
XK2867S1	13	64	110	46
XK2868S1	13	88	136	46
XK2871S1	16	140	204	48
XK2872S1	16	89	156	48



Eye Straps

- Made of mirror polished stainless steel.

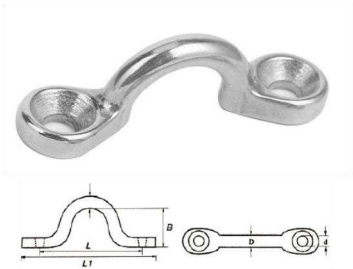
Part No.	Size D mm	L1 mm	L mm	B mm	D mm
XK03300004	4	40	32	11	3.2
XK03300005	5	50	40	13	4.2
XK03300006	6	57	44	16	5.2
XK03300008	8	63	47	17	5.2
XK03300010	10	78	65	18	6.4



Eye Straps

- Made of mirror polished stainless steel.

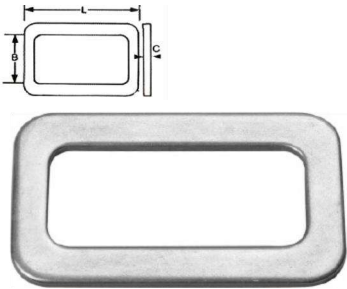
Part No.	Size D mm	L mm	B mm	D mm	A mm
XK03300054	4	35	9	5	10
XK03300055	5	37	13	5	11
XK03300056	6	44	16	6	12
XK03300058	8	59	21	8	16
XK03300060	10	81	26	10	23



Webbing Buckles

- Made of mirror polished stainless steel.

Part No.	Size L mm	A1 mm	A2 mm	D1 mm	D2 mm
XK03300094	12	28	11	9	4.2
XK03300095	14	34	15	11	5.0
XK03300096	19	44	20	12	5.3
XK03300098	28	63	28	12	5.3
XK03300099	33	67	32	14	6.4

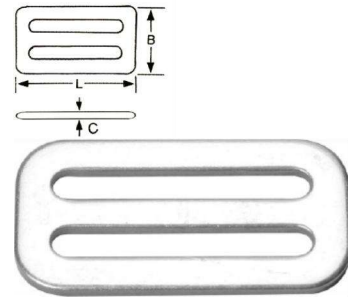




## Webbing Buckles

- Made of mirror polished stainless steel.

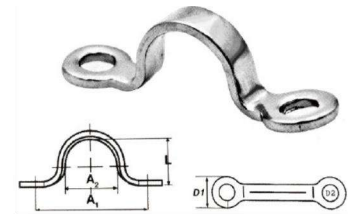
Part No.	B × L mm	C mm
XK03190033	41.3×65.4	3.0



## Eye Straps

- Made of mirror polished stainless steel.

Part No.	B × L mm	C mm
XK03190032	34×65.4	13.0



## Transom Mount Ski Tows

- Made of mirror polished stainless steel.

Part No.	Ttock Dia.	Ring Dia.	Thread Leg
XK7768S	10	62	11.3
XK7772S	13	89	13



# INNOVATION

Marine Seating



# Boat Seats



## DELUXE SPORT FLIP-UP

### Features:

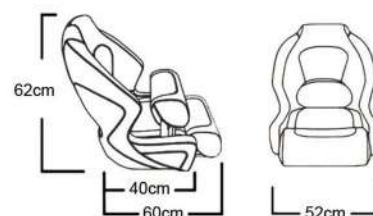
- 1.A flip up bolster allowing it to act as either a supremely comfortable seat or as a leaning post.
- 2.Roto molded plastic substrate with full upholstered cushion.
- 3.Heavy duty marine grade vinyl or fabric and high density foam.
- 4.For additional storage,a pocket with elasticised top is incorporated in the seat back.
- 5.The flip up hinge made from corrosion-resistant aluminum and with Stainless steel hardware.
- 6.Meets the test Standards recommended by ABYC.
- 7.Remark : Custom-made seats are available to meet your design,color and layout requirements.



**XK81010**



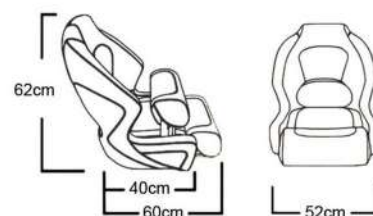
**XK81009**



- Flip-up bolster for standing & leaning
- Weather resistant marine grade vinyl
- High density foam
- Weight: 9.5kg



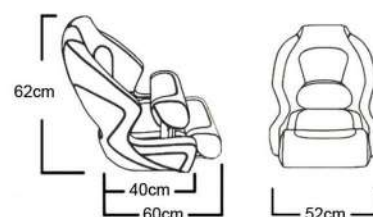
**XK81003**



- Flip-up bolster for standing & leaning
- Weather resistant marine grade vinyl
- High density foam
- Weight: 9.5kg



**XK81005**

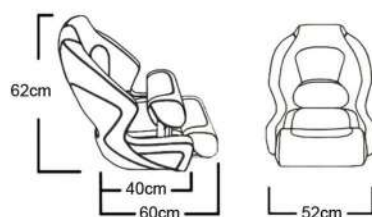


- Flip-up bolster for standing & leaning
- Weather resistant marine grade vinyl
- High density foam
- Weight: 9.5kg





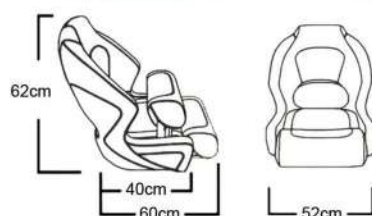
**XK81008**



- Flip-up bolster for standing & leaning
- Weather resistant marine grade vinyl
- High density foam
- Weight: 9.5kg



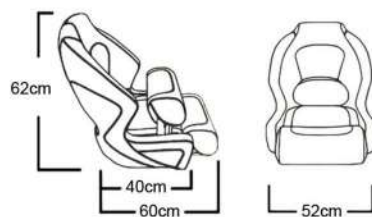
**XK81007**



- Flip-up bolster for standing & leaning
- Weather resistant marine grade vinyl
- High density foam
- Weight: 9.5kg

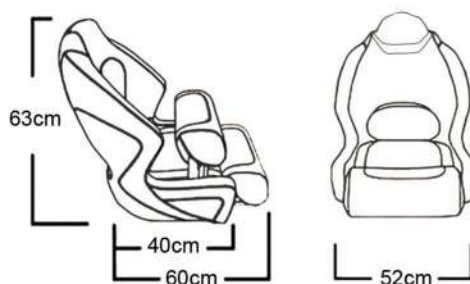


**XK81006**



- Flip-up bolster for standing & leaning
- Weather resistant marine grade vinyl
- High density foam
- Weight: 9.5kg

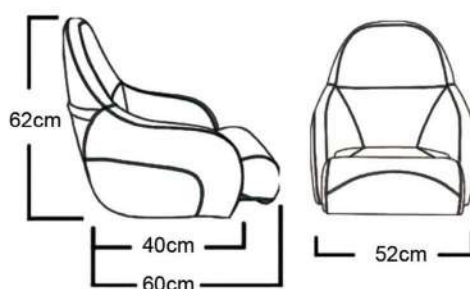




- Flip-up bolster · Sorrento Vinyl
- Weather resistant marine grade vinyl
- Universal mounting pattern: 5"x 12"
- Weight: 9.5kg



**XK81004**



- Flip-up bolster · Sorrento Vinyl
- Weather resistant marine grade vinyl
- Universal mounting pattern: 5"x 12"
- Weight: 9.5kg



**XK82501**



**XK82501-1**



**XK82501-2**

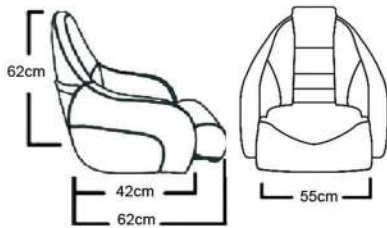
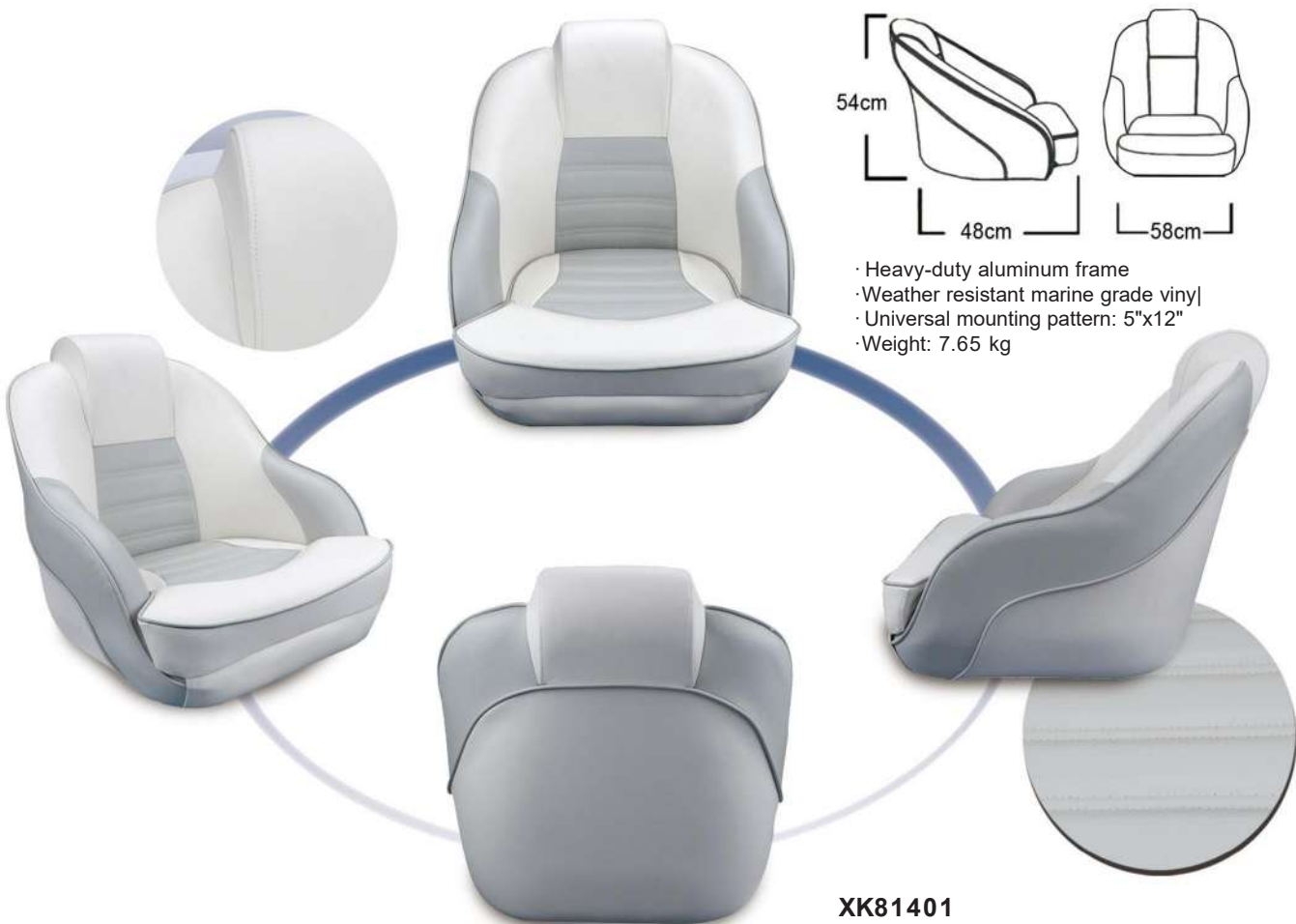


**XK82501-3**



**XK82501-4**





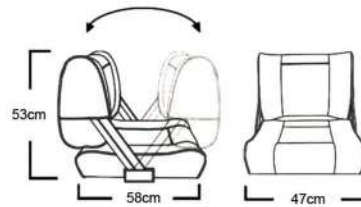
- Flip-up bolster
- Weather resistant marine grade vinyl
- Universal mounting pattern: 5"x 12"
- Weight: 9.5kg



**XK82503**



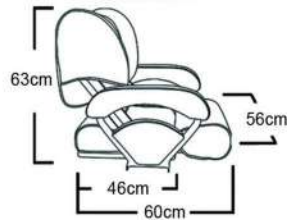
XK83001



- Seat backslides back and forward
- Double sided shaped back cushion
- Thick shaped foam padding for comfort
- Marine grade heavy duty vinyl upholstery
- Weight: 8.2kg



XK81101



- Marine-grade vinyl upholstery
- Fore and aft seat positioning
- Flip-up bolster for standing & leaning
- Weight: 14kg



XK82601

- Flip-up bolster
- Weather resistant marine grade vinyl
- Universal mounting pattern: 5"x 12"
- Weight: 15kg
- Size W : 60cm D : 60cm H : 70cm





XK81801

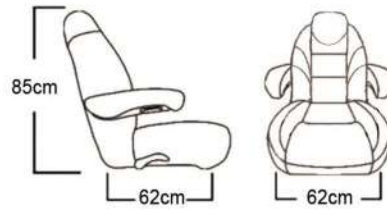
- Sorrento Vinyl
- Weather resistant marine grade vinyl
- Universal mounting pattern: 5"x 12"
- Weight: 13.3kg







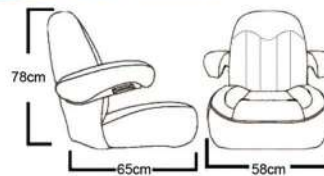
**XK82701**



- Back reclines 45 degrees
- Adjustable Armrests flip-up out of the way
- Universal mounting pattern: 5"x 12"
- Weight: 13.7kg
- Size: W:62cm D:62cm H:85cm



**XK81901**



- Flip-up bolster · Marine grade&water resistant vinyl
- Back reclines 45 degrees
- weather resisant marine grade vinyl
- Universal mounting pattern: 5"x 12"
- Weight: 11.3kg · Size: W:65cm D:58cm H:78cm



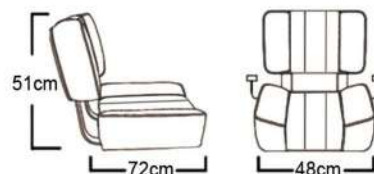
**XK18017**



- Flip-up bolster · Sorrento Vinyl
- Weather resistant marine grade vinyl
- Weight: 9.5kg · Size: W:60cm /74cm D:62cm H:54cm



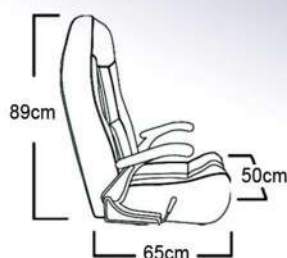
**XK83401**



- Anodized aluminum back support bars
- Armrest supports and cushions-Plastic durable substrate
- Weight: 9. 5kg
- Size: W:72m D:48cm H :51cm



**XK82001**



- Flip-up bolster
- Back reclines 45 degrees
- Universal mounting pattern: 5"x 12"
- Adjustable Arm Rest
- Pocket on back of seat
- Size: W: 65cm D : 50cm H :89cm





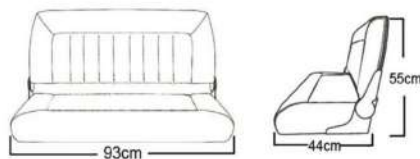


## Double Seats



**XK82301**

- Seats two passengers comfortably
- Thick premium foam padding
- UV stabilised marine upholstery
- Made from Heavy duty solid plastic sheet
- Great for bench or buddy style seats or box mount
- Can be fitted direct to box or pedestal
- Other trim colours available for bulk orders Weight:19. 1kg
- Size:W:67cm D:106cm H:59cm



- Folds down easily. Heavy-duty pinchless hinges
- Quilted Stitch Pattern
- Weight: 11.65kg Size: W : 44cm 93cm H : 55cm



**XK83801**



**XK8130**



**XK81303**



**XK83301**



- Folds down easily
- Heavy-duty pinchless hinge
- Weather resistant marine grade vinyl
- Mounting Pattern 5x5 & 5x2
- Weight: 5.2kg
- Size: W: 47cm D : 45cm H :60cm



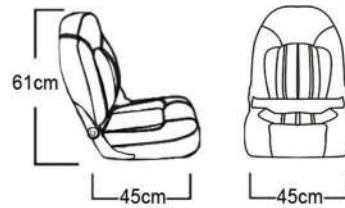
**XK83302**

- Folds down easily
- Heavy-duty pinchless hinges
- Weather resistant marine grade vinyl
- Mounting Pattern 5x5 & 5x2
- Weight:5.55kg
- Size: W:46cm D:45cm H:56cm





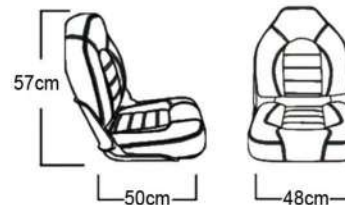
**XK83202**



- Folds down easily
- Heavy duty pinchless hinges
- Weather resistant marine grade vinyl
- Weight: 5.3kg
- Size: W: 45cm D : 45cm H : 61cm



**XK83101**



- Flip-up bolster
- Weather resistant marine grade vinyl
- Universal mounting pattern: 5"x 12"
- Weight: 5.75kg
- Size: W: 42cm D : 44cm H : 42cm



**XK82801**

- Folds down easily,
- Heavy-duty pinchless hinges
- Weather resistant marine grade vinyl
- Weight g: 6.6kg
- Size: W: 46cm. D : 46cm H : 64cm







- Folds down easily
- Heavy duty pinchless hinges
- Weather resistant marine grade vinyl
- Weight: 5.3kg
- Size: W: 45cm D : 45cm H : 61cm

**XK83201**



- Flip-up bolster
- Weather resistant marine grade vinyl
- Universal mounting pattern: 5"x 12"
- Weight: 5.75kg
- Size: W: 42cm D : 44cm H : 42cm

**XK82401**



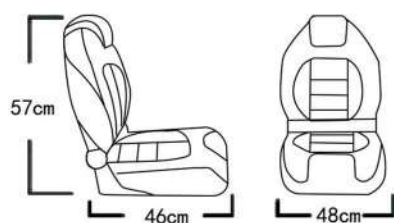
- Flip-up bolster
- Weather resistant marine grade vinyl
- Universal mounting pattern: 5"X 12"
- Weight: 3.3kg
- Size: W: 41cm D : 39cm H : 44cm

**XK81302**





XK18031



- Flip-up bolster
- Weather resistant marine grade vinyl
- Folds down easily
- Heavy-duty pinchless hinges
- Weight: 6kg Size: W: 48cm D : 46cm H :57cm



XK81701



- Flip-up bolster
- Weather resistant marine grade vinyl
- Folds down easily
- Heavy-duty pinchless hinges
- Weight: 6.7kg
- Size: W: 45cm D : 45cm H :60cm



XK82901



- Flip-up bolster
- Weather resistant marine grade vinyl
- Folds down easily
- Heavy-duty pinchless hinges
- Weight: 6kg Size: W: 48cm D : 46cm H :57cm

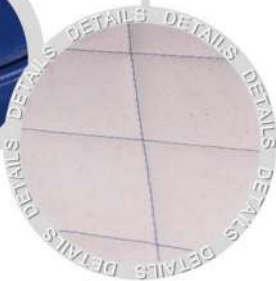




Low Back Multi Color



XK83601



XK84201



XK84203



# High Back Multi Color

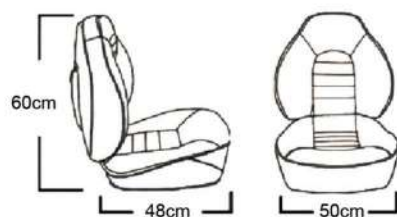


XK84001

XK84301

XK18039



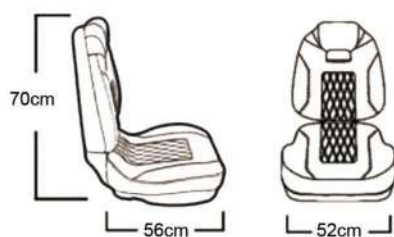


- Strap on back for secure seat fastening-Folds down easily
- Weather resistant marine grade vinyl- Pinchless hinges
- Universal mounting pattern: 5" x 5"&5" x 12" Bolt Pattern
- Weight: 5.45kg
- Size: W:48cm D:50cm H:60cm

**XK83701**



**XK83701-1**



- Sorrento vinyl
- Folds down easily
- Concealed pinch proof. center pivot point
- Weather resistant marine grade vinyl
- Universal mounting pattern: 5"x 5"&5"x 12"
- Grandeur vinyl
- Weight 8.5kg
- Size:W: 56cm D:52cm H:70cm



**XK18041-1**



**XK81601**



**XK18041-3**



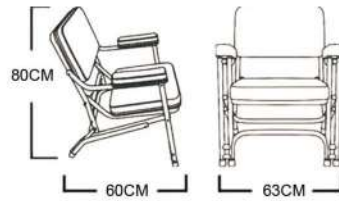
## Deck Chair Premium

· Take these chairs wherever you go. Perfect for picnics, decks, docks, or the action station for the fighting fisherman. Folds down easily for transportation.

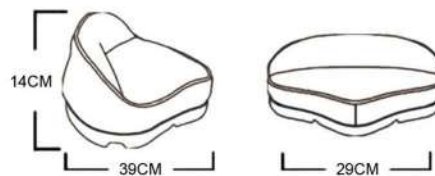
- Durable plastic substrate
- Heavy-duty aluminum tubing
- Weather resistant marine grade vinyl
- Weight: 9.1 kg
- Size: W: 63cm D: 60cm H: 80cm



XK82201



## Deck Chair Premium



- Available in a variety of colors
- Universal mounting pattern: 5" x 5"
- Pro Stand-Up seats include external cover for comfort.
- Weight: 1 kg
- Size: W: 39cm D: 29cm H: 14cm



XK18043-1



XK18043-2



XK81501



XK18043-4



XK18043-5



XK81503



XK18043-7



Deck Chair Premium



- Injection molded seats with interlocking hinge for greater structural support. Extra wide seat with high quality upholstery for all day comfort.
- 5"x5" & 5"x 12" Bolt Pattern
- Snap on cushions
- Weight: 3.5kg
- Size: W:50cm D:46cm H:50cm



**XK83501**



**XK83503**



**XK18044-3**



**XK18044-4**



**XK83502**

Skipper Standard



- Super strong copolymer frame with extra wide contoured seat and curved back.
- Durable strap holds seat closed when folded down.
- Universal mounting pattern: 5.25" x 5.25"
- Weight: 2.9kg
- Size: W:51cm D:46cm H:35cm





**XK84103**



**XK84104**



**XK84101**



**XK84102**





**XK81002**



**XK81003**



**XK81011**



**XK81012**



**XK81013**



**XK81014**



**XK81015**



**XK81016**



**XK81017**



**XK81018**



**XK81304**



**XK81305**





**XK81306**



**XK81402**



**XK81502**



**XK81602**



**XK81702**



**XK82101**



**XK82402**



**XK82602**



**XK82502**



**XK82902**



**XK83303**



**XK83304**





XK83504



XK83505



XK83506



XK83507



XK83508



XK83602



XK83603



XK83702



XK84105



XK84106



XK84202



XK84302



**XK84204**



**XK84302**



**XK85103**



**XK85102**



**XKMC002**



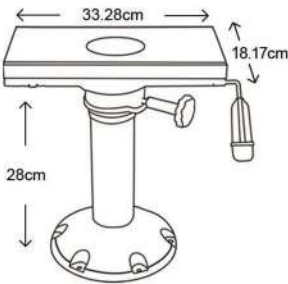
**XK91001**



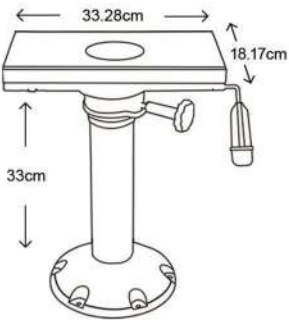
**塑料座椅**

# Seat Pedestals

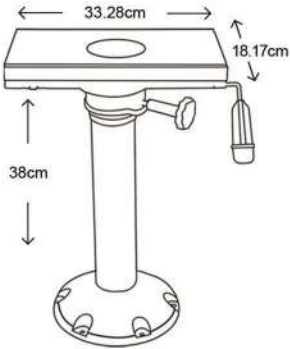
## Fixed Height Pedestal With Slide



XK11011H

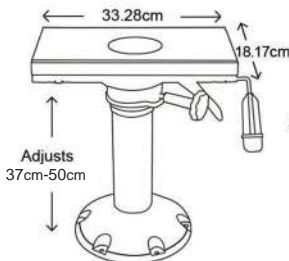


XK11013H

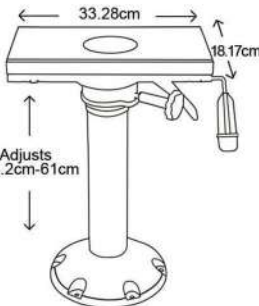


XK11015H

## Pneumatic Adjustable Pedestal With Slide



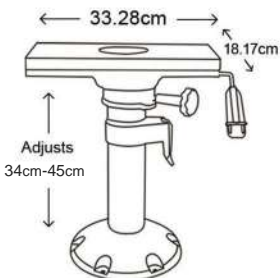
XK11083



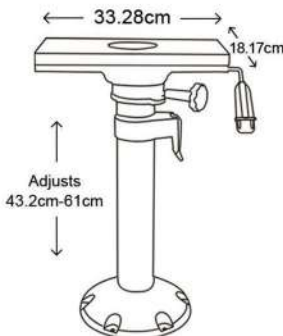
XK11087



## Manually Adjustable Pedestal With Slide



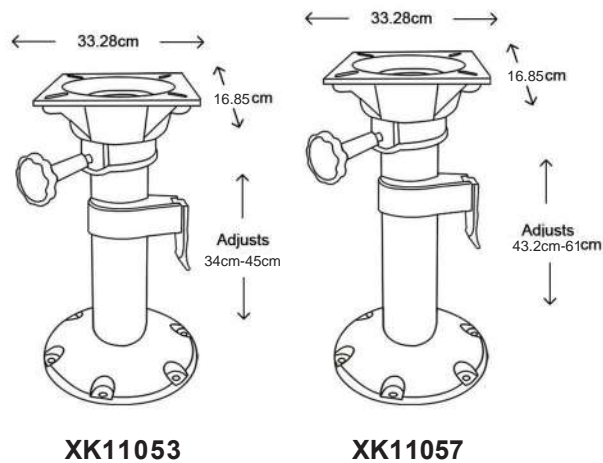
XK11063



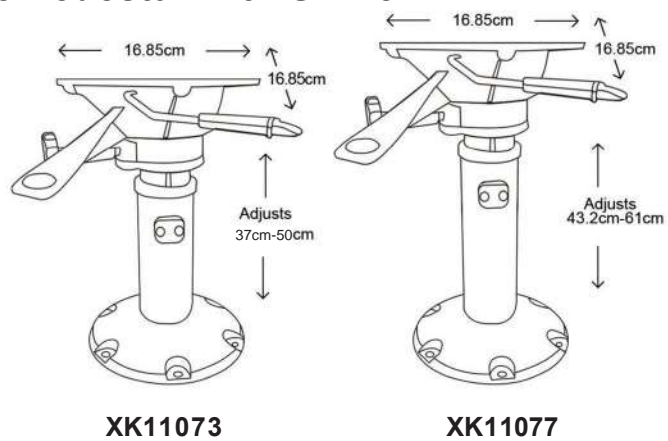
XK11067



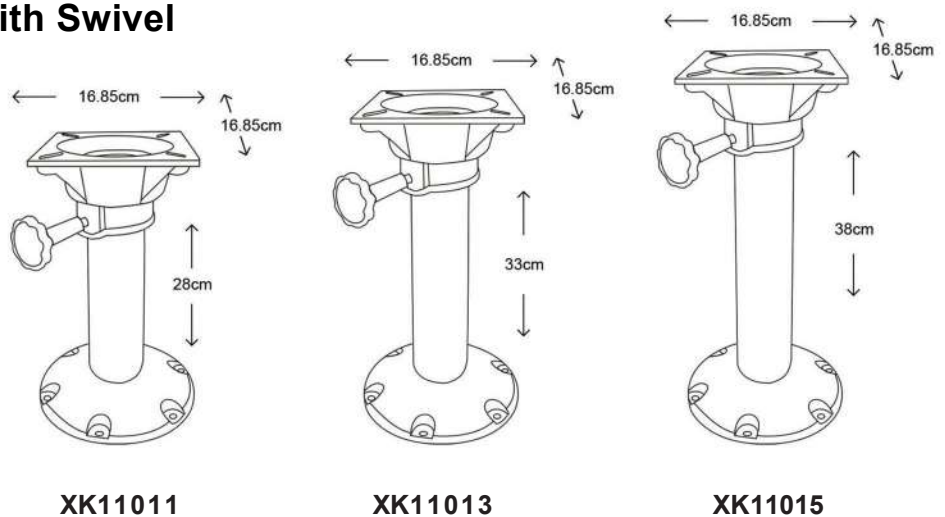
## Manually Adjustable Pedestal With Swivel



## Pneumatic Adjustable Pedestal With Swivel



## Fixed Height Pedestal With Swivel



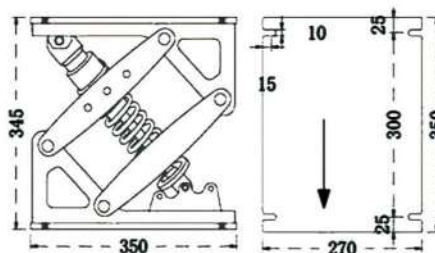


## Suspension System



**XK19015**

- Main structure aluminum alloy, anodized surface; nylon gasket and stainless steel fastener
- Height is adjusted by three levels, and the lifting stroke can be adjusted by 40mm
- Shock absorption performance of the spring strut is about 80 mm and the rated value of the spring strut is 60kg- 150kg
- Net weight: About 13.9kg



## Table Pedestal

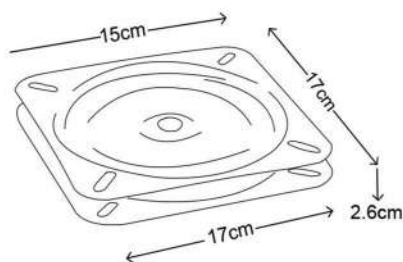


**XK19016**

## Seat Swivel



**XK8316SB**



**XK8316S**

- Fits most standard 7" x 7" seat mounts
- Corrosion-resistant
- Add seat swivel for greater range of mobility
- Hardware not included

## Undertable seat



XK6712AA



Min 21 - 1/4" ( 540mm )



Max 27 - 3/4" ( 695 mm )



XK99650



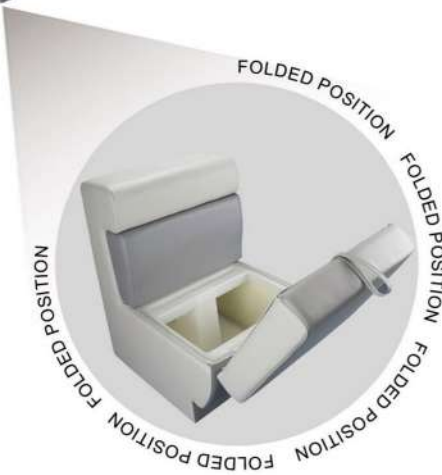
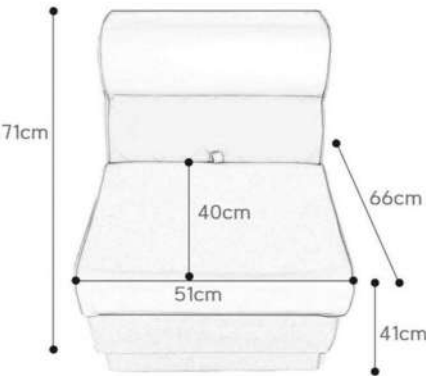
# Pontoon Sofa Series



## Bench Seats



XK71102

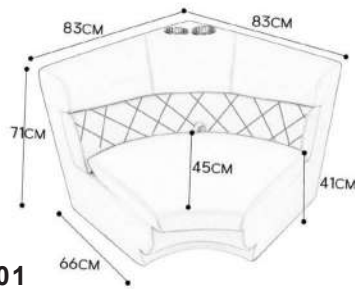
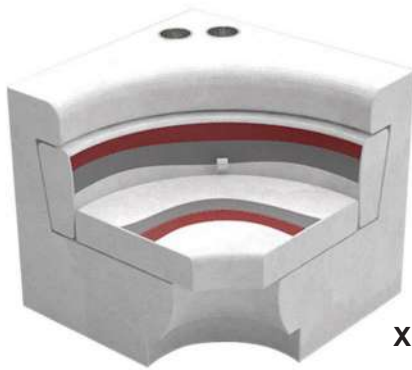
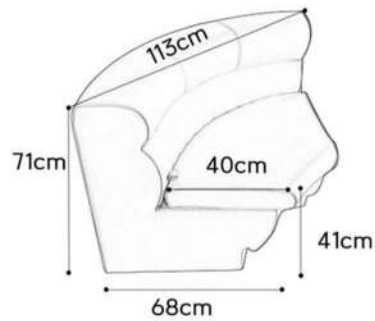


XK7110



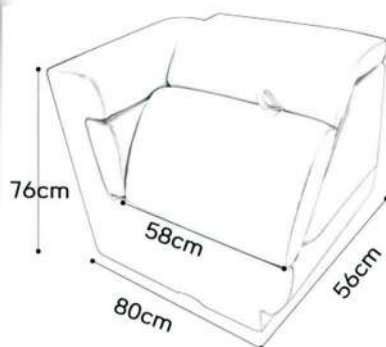
XK71103

## Corners

**XK71201****XK71301****XK71202****XK71502**



## Corners



PONTOON  
SOFA  
SERIES



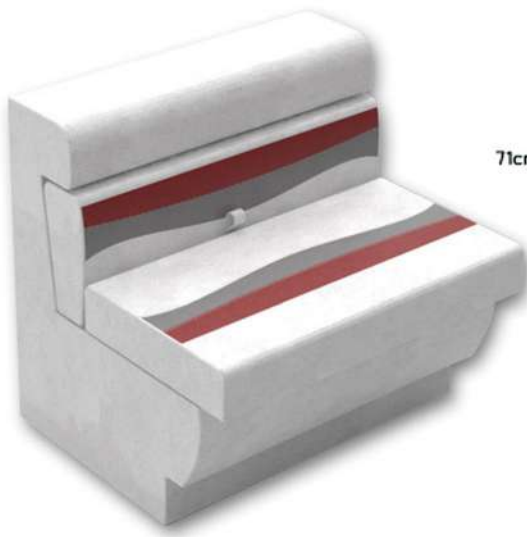
**XK71303**



**XK71302**



## Bench Seats



PONTOON  
SOFA  
SERIES



XK71401



XK71402





# Arms



**XK22006**



**XK22007**



**XK22008**



**XK2200**



**XK22010**



## Deluxe



**XK71601**



**XK22012**



XK82302



XK82303



XK83802



XK83803



XK83804



XK83901





Marine Grde Vinyl



0001



0002



0003



0004



0005



0006



0007



0008



0009



0010



0011



0012



0013



0014



0015



0016



0017



0018



0019



0020



0021



0022



0023



0024



M001



M002





Marine Seating



XINKUN

## XinYi XinKun Metal Porducts Co., Ltd.

**Tel:** 15062076586  
**Email:** [info@xkmarine.com](mailto:info@xkmarine.com)  
**Website:** <https://www.xkmarine.com/>  
**Add:** Industrial Zone, Tangdian Street, Xinyi City,  
Jiangsu Province, China

